

# Q426.001

## 2006-2009 Yamaha

### 450 Wolverine

### Stage 1

For mildly tuned machines using the stock airbox with stock or aftermarket filter. May also be used with a good high flow aftermarket exhaust system.

<b><i>Parts List</i></b>		
1	Main Jet	DJ120
1	Main Jet	DJ124
1	Main Jet	DJ128
1	Main Jet	DJ132
1	Main Jet	DJ136
1	Main Jet	DJ140
1	Fuel Needle	DNO490
1	Pilot Jet	DPJM018
1	Slide Spring	DSP027
1	Slide Drill	DD115
1	Needle Spring	DSP77
1	Adjusting Washer	DW0001
1	E-Clip	DE0001

# STAGE ONE INSTRUCTIONS

Q426.001

1. Remove vacuum slide from carb. Remove stock needle & spacers, noting order of assembly (Fig.A).
2. Locate the small slide lift hole in Fig. A. Enlarge the small lift hole with the drill provided (DD115).
3. Install Dynojet needle on groove #3 for applications below 5000 feet, groove #2 for above 5000 feet, using all stock spacers (Fig.A). Install the Dynojet slide spring (DSP027) in place of the stock slide spring.  
**NOTE:** The DSP77 spring does not have to be used, it is supplied in case the stock spring is misplaced. The Dynojet washer (DW0001) does not need to be installed at this time, it is for half step adjustments. After installing the slides in the carbs, be sure to check slide movement manually before airbox installation.
4. Locate the the stock pilot jet in Fig. B. Replace the stock pilot jet with the Dynojet pilot jet provided (DPJM018).
5. Remove stock main jet and replace with the Dynojet main jet provided. When using the stock exhaust install the DJ128 below 3000 feet, DJ124 from 3000 to 6000 feet and DJ120 above 6000 feet. When using an aftermarket exhaust with a high flow baffle, use the DJ132 below 3000 feet, DJ128 from 3000 to 6000 feet and the DJ124 above 6000 feet.
6. Locate the Fuel Mixture Screw (Fig.B). Using a flat blade screwdriver, turn the mixture screw clockwise until it seats, then turn out 2 turns, 1.5 turns above 5000 feet.

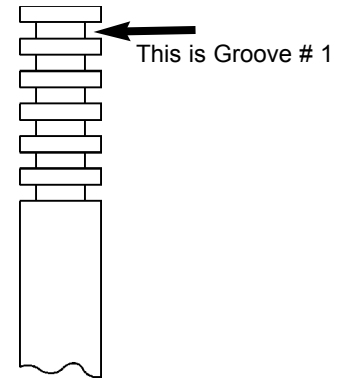


Fig.A

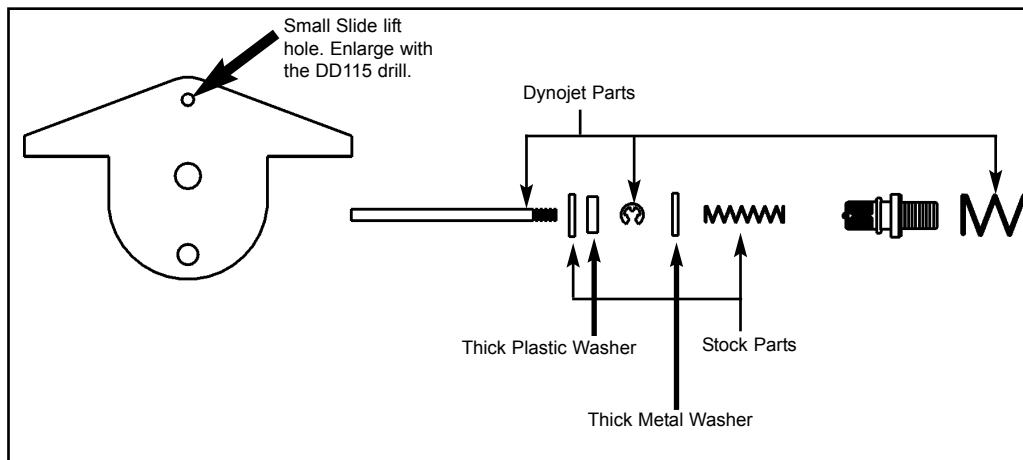
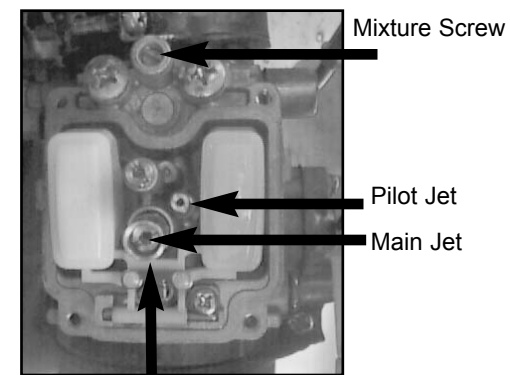


Fig.B



Main Jet cup must be re-installed