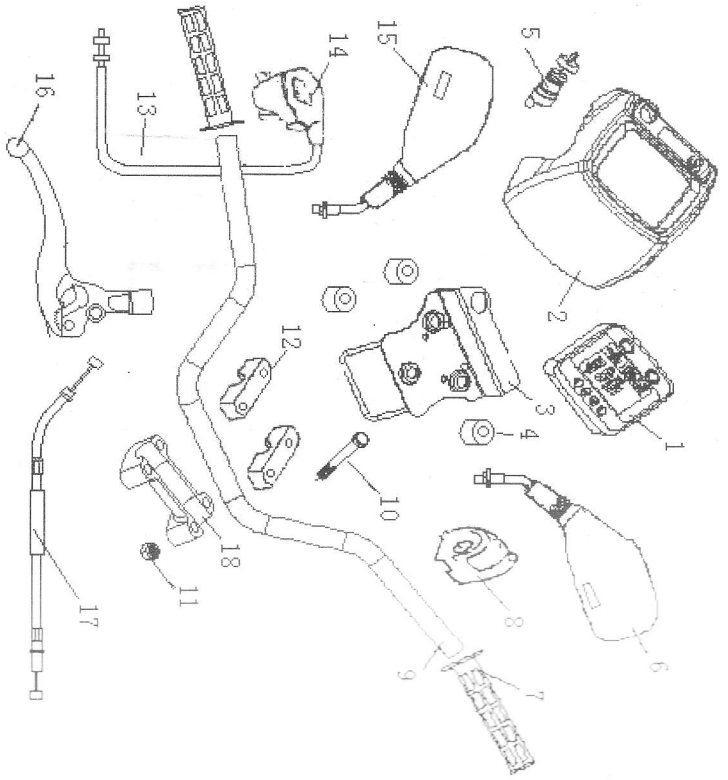


PARTS MANUAL

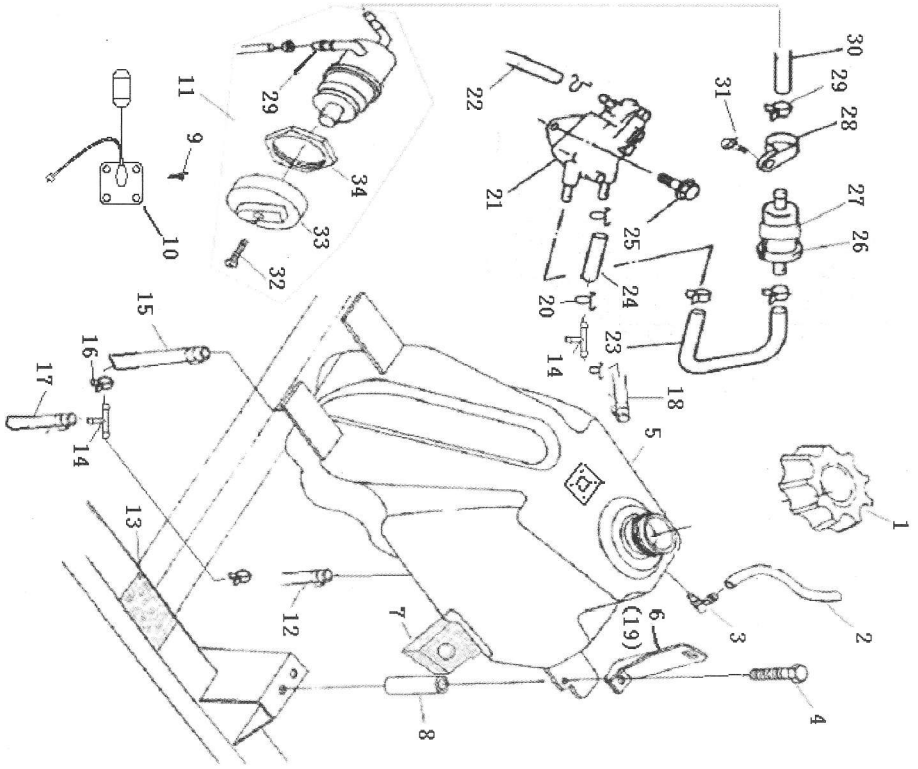
FA-H300 4X4 

1 HANDLEBAR



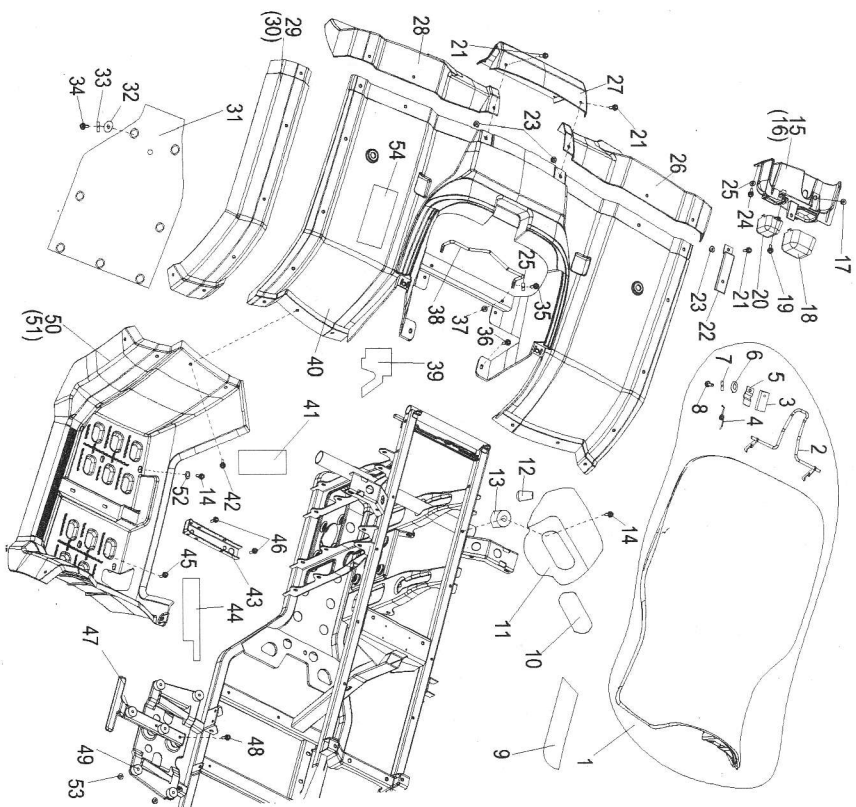
REF. No.	PART No.	DESCRIPTION	QTY	名称
1	5.1.01.0012	SPEEDOMETER	1	仪表显示器(四脉, 防水)
2	6.2.01.0010	INSTRUMENT HOUSING	1	仪表装饰罩
3	1.4.01.0010	INSTRUMENT BRACKET	1	仪表安装板
4	6.2.01.0020	RUBBER BUSH	3	橡胶套A
5	5.3.01.0012	IGNITION SWITCH WITH KEY	1	油门锁(欧标, 防水)
6	6.3.01.0010	REAR VIEW MIRROR LEFT	1	左后视镜
7	4.4.01.0012	GRIP	2	握把
8	5.3.01.0026	SWITCH ASSY	1	左把手开关(欧标, 防水)
9	4.4.01.0022	HANDLE BAR	1	方向把
10	0.01.00130	BOLT M8X60	4	螺栓 M8x60
11	0.03.00130	NUT M8	4	螺母 M8
12	4.4.01.0030	HANDLE BAR CLAMP TOP	2	方向把上压块
13	4.5.01.0010	THROTTLE CABLE	1	油门钢索组件
14	4.4.14.0010	THROTTLE CONTROL	1	油门固定座组件
15	6.3.01.0020	REAR VIEW MIRROR RIGHT	1	右后视镜
16	4.3.01.0010	PARKING HANDLE	1	驻车把手
17	4.5.01.0021	PARKING LINE	1	驻车钢索组件
18	4.4.01.0050	HANDLE BAR CLAMP BOTTOM	1	方向把下压块

2 FUEL TANK



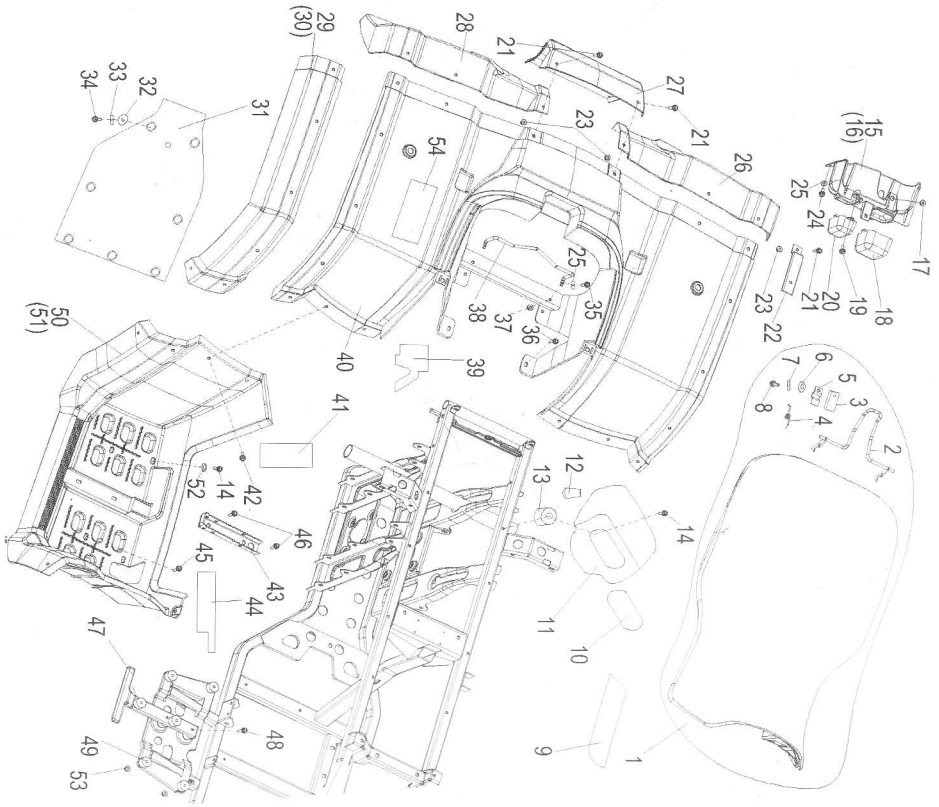
REF. No.	PART NO	DESCRIPTION	Q'TY	名称
1	2.9.01.0010	FUEL CAP	1	油箱盖
2	2.9.01.0020	VENT TUBE	1	油箱通气管
3	2.9.01.0030	VENT FITTING	1	通气嘴
4	0.01.00230	BOLT M6X60	2	螺栓 M6X60
5	2.9.01.2001	FUEL TANK	1	油箱(新状态)
6	2.9.01.0050	MOUNTING BRACKET LEFT	1	左油箱压板
7	2.9.01.0070	FOAM PAD	1	油箱安装缓冲垫
8	2.9.01.0080	SPACER	2	油箱安装衬套
9	0.02.03150	BOLT	4	十字材盘头螺钉M6×10
10	2.9.01.2021	OIL SENSOR	1	油位传感器(防水)
11	2.9.01.1101	FUEL VALVE ASSY	1	油箱开关
12	2.9.01.0220	FUEL HOSE	1	进油管III
13	2.9.01.0090	MOUNTING PAD	2	油箱缓冲海绵垫50X22X5
14	2.9.01.0230	T PIPE	2	油箱三通
15	2.9.01.0100	FUEL HOSE	1	进油管IV
16	6.4.01.0020	CLIP 11.5	5	卡箍11.5
17	2.9.01.0240	FUEL HOSE	1	进油管II
18	2.9.01.0250	PIPE II	1	负压管II
19	2.9.01.0160	MOUNTING BRACKET RIGHT	1	右油箱压板
20	6.4.01.0040	CLIP 10	5	卡箍10
21	2.9.01.0200	FUEL PUMP ASSY	1	汽油泵
22	2.9.01.0210	FUEL LINE I	1	出油管 I

3 REAR FENDERS



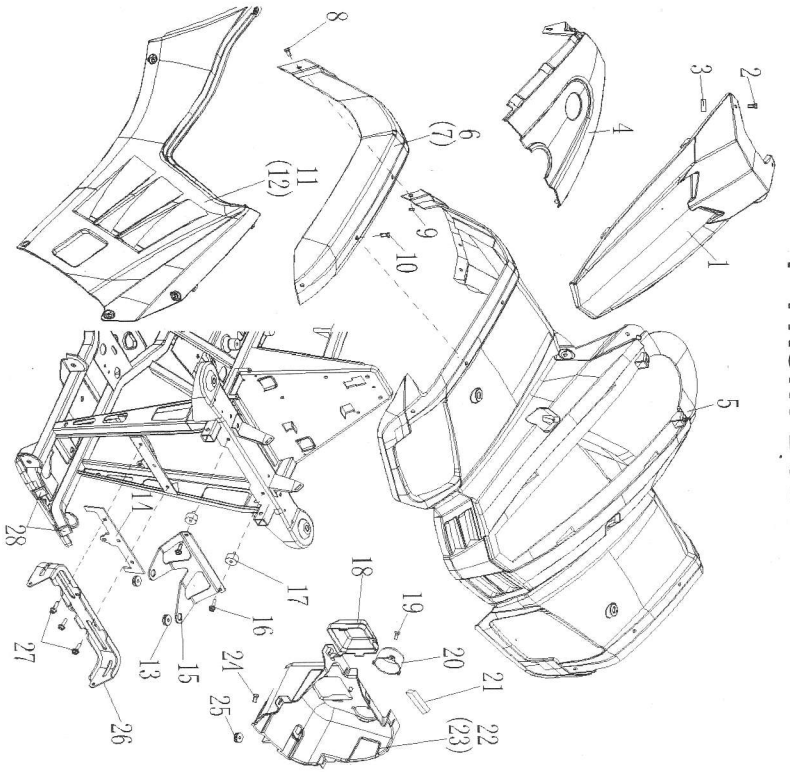
REF. No.	PART No.	DESCRIPTION	Q'TY	名称
1	6.1.01.0000	SEAT ASSY	1	坐垫总成
2	6.1.01.0030	LATCH ASSEMBLY	1	坐垫锁钩
3	6.4.01.0110	FICHE	2	卡片
4	6.1.01.0020	SPRING	2	座垫扭簧
5	6.1.01.0040	RETAINER CLIP	2	压板
6	0.04.00110	WASHER	2	垫片6
7	0.04.00610	WASHER	2	弹垫6
8	0.01.00430	BOLT	2	螺栓 M6X15
9	6.1.01.0060	HEAT INSULATOR	1	坐垫隔热膜
10	6.2.01.0030	STORAGE BOX COVER	1	工具箱盖
11	6.2.01.0040	STORAGE BOX	1	工具箱
12	6.2.01.0190	PLUG	1	工具箱漏水塞
13	2.5.01.0010	PAD,AIR CLEANER	2	空滤器缓冲垫
14	0.01.00530	BOLT	6	螺栓 M6X30
15	6.2.01.0240	TALLIGHT COVER,R	1	右后尾灯罩
16	6.2.01.0210	TALLIGHT COVER,L	1	左后尾灯罩
17	6.2.01.0020	RUBBER BUSH	4	橡胶套A
18	6.2.01.0220	SMALL TALLIGHT CUP	2	尾灯维修小盖
19	0.02.00630	BOLT	2	十字槽盘头螺钉M6X12
20	6.2.01.0230	BIG TALLIGHT CUP	2	尾灯维修大盖
21	8.1.01.0010	BOLT	10	安装螺栓
22	1.4.01.0120	REAR STRENGTHEN PLATE	2	尾灯加强板
23	0.03.00230	NUT M6	10	螺母 M6 (防滑)
24	0.02.00930	BOLT	8	螺钉 ST4, 2X12
25	0.04.00210	WASHER	10	垫片5
26	6.2.01.0060	BOARD,REAR LIGHT, L.	1	左后尾灯安装板
27	6.2.01.0070	BOARD, REAR CONNECT	1	后连接板
28	6.2.01.0080	BOARD,REAR LIGHT, R.	1	右后尾灯安装板
29	6.2.01.0090	REAR MUD GUARD RIGHT	1	后护罩右边条
30	6.2.01.0170	REAR MUD GUARD LEFT	1	后护罩左边条
31	6.2.01.0110	PLASTIC PLATE	1	底板护板
32	8.8.01.0010	WASHER	7	安装垫片

3 REAR BODY



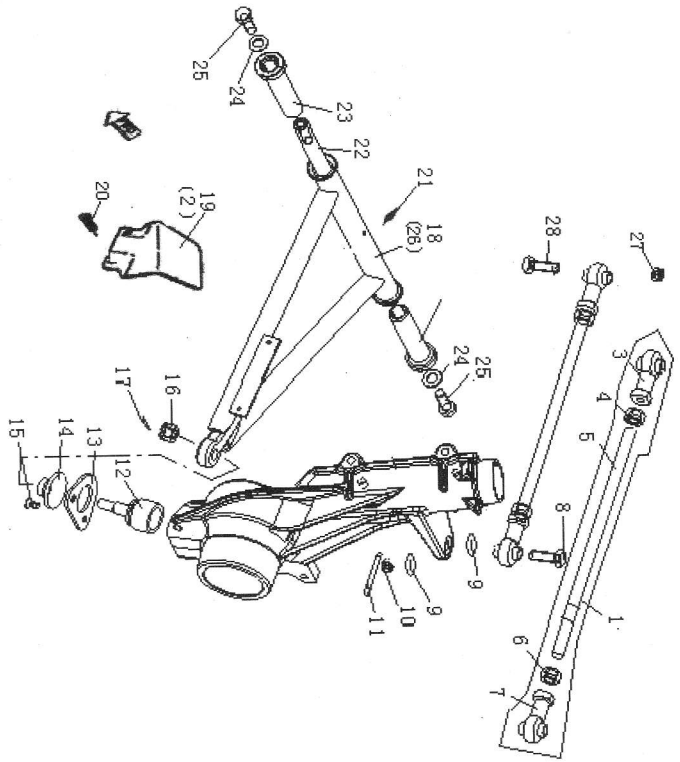
REF. No.	PART NO.	DESCRIPTION	QTY	名称
33	0.04.00610	WASHER	7	彈簧6
34	0.01.00430	BOLT	7	螺栓M6X15
35	0.02.00230	BOLT	2	十字槽盤頭螺釘 M5X15
36	0.01.00330	BOLT	4	螺栓M6X12
37	0.03.00430	NUT	2	螺母 M6
38	6.2.01.0250	LATCH BRACKET	1	座墊鎖扣
39	6.2.01.0270	HEAT INSULATION B	1	隔熱膠E
40	6.2.01.005024	REAR FENDERS(GREEN ARMY)	1	后座罩(軍綠) WY-12
	6.2.01.005023	REAR FENDERS(ORANG)	1	后座罩(橘黃) WY-11
	6.2.01.005002	REAR FENDERS(RED)	1	后座罩(本田紅) WY-02
		REAR FENDERS(CAMO)	1	后座罩(迷彩)
	6.2.01.005001	REAR FENDERS(BLACK)	1	后座罩(黑色) WY-01
41	6.2.01.0120	HEAT INSULATION E	1	隔熱膠E
42	6.2.01.0570	SCREW	12	小圓頭螺釘
43	1.5.01.0020	ANTISKID	2	防滑踏板
44	6.2.01.0280	HEAT INSULATION C	1	隔熱膠C
45	0.01.01430	BOLT	4	螺栓M6X25
46	0.01.00630	BOLT	4	螺栓 M6X20
47	1.5.01.0010	FOOTREST BRACKET	2	脚踏支架
48	0.01.00430	BOLT	4	螺栓M6X15
49	8.2.01.0010	RUBBER PAD	16	彈簧安裝螺母
50	6.2.01.0100	FOOTREST RIGHT	1	右脚踏板
51	6.2.01.0180	FOOTREST LEFT	1	左脚踏板
52	0.04.00110	WASHER	8	墊片6
53	0.03.00330	NUT	16	螺母 M6
54	6.2.01.0150	HEAT INSULATION D	1	隔熱膠D

4 FRONT BODY



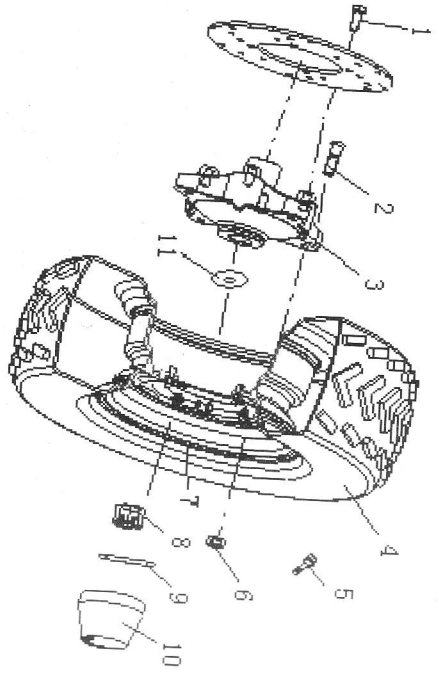
REF. No.	PART NO.	DESCRIPTION	QTY	名称
1	6.2.01.029001	FRONT COVER (BLACK)	1	前面罩装饰板(黑色)
		FRONT COVER (CAMO)	1	前面罩装饰板(迷彩)
2	0.02.01130	BOLT ST4.8X16	4	十字槽盘头自攻螺钉 ST4.8X16
3	8.2.01.0130	FICHE	4	自攻夹4.8
4	6.2.01.042001	PLATE TANK (BLACK)	1	油箱盖板(黑色)
		PLATE TANK (CAMO)	1	油箱盖板(迷彩)
5	6.2.01.003024	FRONT BODY (GREEN ARMY)	1	前面罩(军绿) WY-12
	6.2.01.003023	FRONT BODY (ORANG)		前面罩(橘黄) WY-11
	6.2.01.003002	FRONT BODY (RED)	1	前面罩(本田红) WY-02
		FRONT BODY (CAMO)	1	前面罩(迷彩)
	6.2.01.003001	FRONT BODY (BLACK)	1	前面罩(黑色) WY-01
6	6.2.01.0330	MUD GUARD RIGHT	1	前护罩右边条
7	6.2.01.0340	MUD GUARD LEFT	1	前护罩左边条
8	8.1.01.0010	BOLT M6X20	16	安装螺栓
9	0.03.00230	NUT M6	16	螺母 M6 (防滑)
10	6.2.01.0570	SCREW	12	小膨胀螺钉
11	6.2.01.032023	SIDE COVER RIGHT (GREEN ARMY)	1	右侧板(军绿)
	6.2.01.032024	SIDE COVER RIGHT (ORANG)	1	右侧板(橘黄)
	6.2.01.032002	SIDE COVER RIGHT (RED)	1	右侧板(本田红)
		SIDE COVER RIGHT (CAMO)	1	右侧板(迷彩)
	6.2.01.032001	SIDE COVER RIGHT (BLACK)	1	右侧板(黑色)
12	6.2.01.031023	SIDE COVER LEFT (GREEN ARMY)	1	左侧板(军绿) WY-12
	6.2.01.031024	SIDE COVER LEFT (ORANG)	1	左侧板(橘黄)
	6.2.01.031002	SIDE COVER LEFT (RED)	1	左侧板(本田红)
		SIDE COVER LEFT (CAMO)	1	左侧板(迷彩)
	6.2.01.031001	SIDE COVER LEFT (BLACK)	1	左侧板(黑色)

5 A-ARM



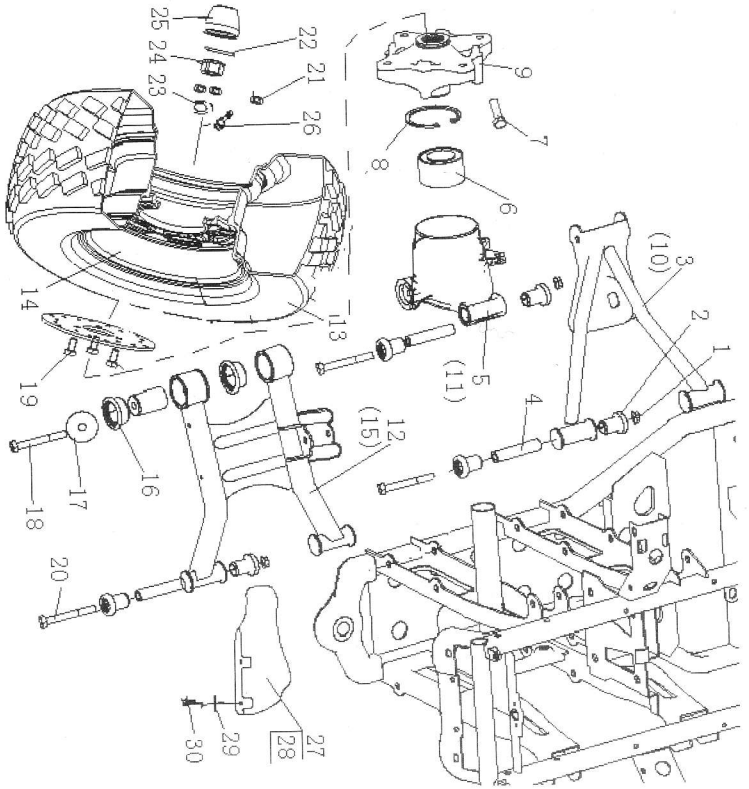
REF. No.	PART No.	DESCRIPTION	Q'TY	名称
1	3.1.01.1000	TIE ROD ASSY	2	转向横拉杆组件
2	6.2.01.0450	A - ARM SHIELD RIGHT	1	前右轴挡片
3	3.1.01.1040	TIE ROD END B	2	球头节B
4	0.03.01320	NUT(RIGHT)	2	螺母 M12x1.25
5	3.1.01.1020	TIE ROD	2	横拉杆
6	8.2.01.0020	NUT(LEFT)	2	转向拉杆锁紧螺母
7	3.1.01.1010	TIE ROD END A	2	球头节A
8	0.01.00733	BOLT M10X1.25X55	2	螺栓M10X1.25X55
9	0.04.00410	WASHER	4	垫圈10
10	0.03.01030	NUT M10X1.25	2	开槽螺母 M10X1.25
11	0.08.02300	COTTER PIN	2	开口销 2.5X20
12	4.2.01.1010	BALL JOINT STUD	2	前减震器支撑联轴节
13	4.2.01.1020	BALL JOINT MOUNTING BRACKET	2	联轴节安装板
14	4.2.01.1030	BALL JOINT CUP	2	橡胶盖
15	0.02.00830	BOLT M6X12	4	十字槽沉头螺栓 M6X15
16	0.03.01030	NUT M10	2	开槽螺母 M10X1.25
17	0.08.00100	COTTER PIN	2	开口销 2.5X25
18	1.3.01.1010	A-ARM LEFT	1	左A臂焊接组件
19	6.2.01.0440	A - ARM SHIELD LEFT	1	前左轴挡片
20	0.02.00630	SCREW M5X12	4	十字槽盘头螺钉 M5X12
21	8.5.01.0010	GREASE FITTING	2	M6油杯
22	1.3.01.1020	A-ARM PIVOT SHAFT	2	A臂轴
23	1.3.01.1030	BUSHING	4	内轴套
24	0.04.00810	WASHER 10	4	弹垫10
25	8.1.01.0030	BOLT M10X25	4	A臂轴安装螺栓
26	1.3.01.1050	A-ARM RIGHT	1	右A臂焊接组件
27	0.03.00530	NUT M10X1.25	2	螺母 M10x1.25
28	0.01.02730	BOLT M10X1.25X55	2	螺栓 M10x1.25x55

6 WHEEL FRONT



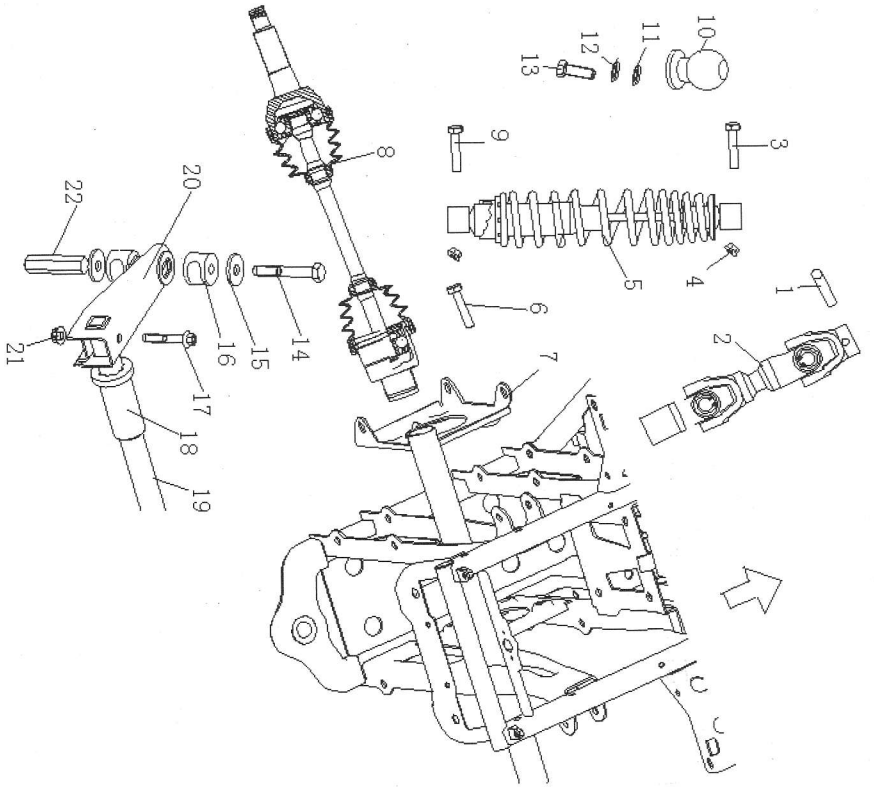
REF. No.	PART No.	DESCRIPTION	QTY	名称
1	0.02.02430	BOLT M8X20	8	内六角平圆头螺钉 M8X20
2	8.1.01.0040	STUD,STEEL WHEEL	8	联接螺栓
	8.1.01.0050	STUD,ALUMINUM WHEEL	8	联接螺栓 (铝轮钢专用)
3	4.1.01.0012	WHEEL HUB,FRONT	2	前轮毂B
4	4.1.01.0130	TIRE FRONT(ON-ROAD)	2	前轮胎AT25X8-12 (公路花纹)
	4.1.01.0120	TIRE FRONT(OFF-ROAD)	2	前轮胎AT25X8-12 (越野胎)
5	4.1.01.0210	PLUG PIPE	2	气门嘴组件
6	0.03.00530	NUT M10X1.25	8	螺母 M10X1.25
	8.2.01.0040	NUT,ALUMINUM WHEEL	8	前后轮锁紧螺母 (铝轮钢专用)
7	4.1.01.0170	RIM FRONT,STEEL	2	前轮钢 (铁)
	4.1.01.0182	RIM FRONT,ALUMINUM	2	前轮钢 (铝合金, 新状态)
8	8.2.01.0150	SLOTTED NUT M16X1.5	2	开槽螺母M16X1.5
9	0.08.00200	COTTER PIN	2	开口销 4X28
10	6.2.01.0470	HUB CAP	2	轮毂盖
11	0.04.03450	WASHER	2	垫圈 16x36x3

7 WHEEL REAR



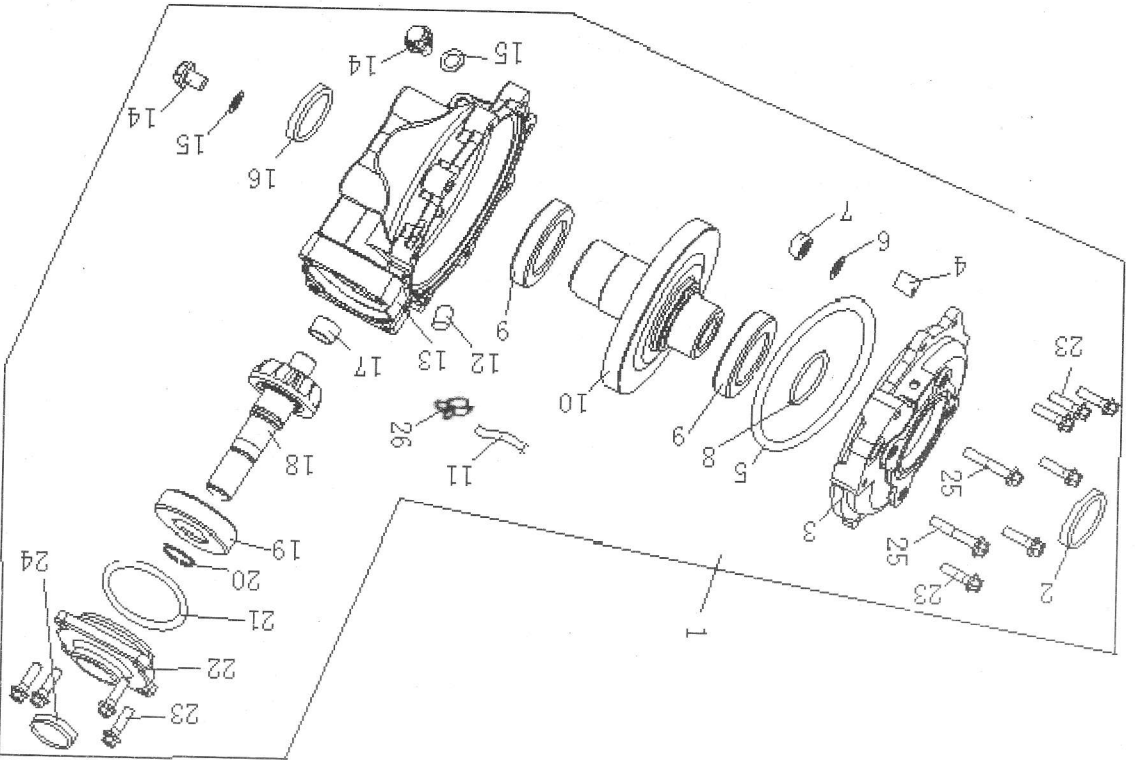
REF. No.	PART No.	DESCRIPTION	Q'TY	名称
1	0.03.00530	NUT M10X1.25	8	螺母 M10x1.25
2	6.2.09.0050	BUSHING II	20	内轴套 II
3	1.3.09.1000	TOP, SWING ARM, LEFT	1	左后上摇臂组件
4	1.3.09.0020	BUSHING 16x74	10	衬套16x74
5	4.1.09.0031	WHEEL BOSS, LEFT	1	左后轮毂连接座 (欧标)
6	0.05.02600	BEARING	2	轴承DAC107410
7	8.1.01.0040	STUD, STEEL WHEEL	8	联接螺栓
8	8.1.01.0050	STUD, ALUMINUM WHEEL	8	联接螺栓 (铝轮胎专用)
9	0.04.03810	BEAD FLANGE	2	孔用弹性挡圈75
10	4.1.01.0081	WHEEL HUB, REAR	2	后轮毂A
11	1.3.09.3000	TOP, SWING ARM, RIGHT	1	右后上摇臂组件
12	4.1.09.0011	WHEEL BOSS, RIGHT	1	右后轮毂连接座 (欧标)
13	1.3.09.2000	DOWN, SWING ARM, LEFT	1	左后下摇臂组件
14	4.1.01.0160	TIRE REAR(ON-ROAD)	2	后轮胎AT25x10-12(公路花纹)
15	4.1.01.0150	TIRE REAR(OFF-ROAD)	2	后轮胎AT25x10-12(越野胎)
16	4.1.09.0060	RIM REAR, STEEL	2	后轮胎圈
17	4.1.09.0070	RIM REAR, ALUMINUM	2	后轮胎圈 (铝合金, 新状态)
18	1.3.09.4000	DOWN, SWING ARM, RIGHT	1	右后下摇臂组件
19	6.2.09.0060	BUSHING III	8	内轴套 III
20	8.8.09.0010	WASHER	4	垫片10.5x49x2.5
21	0.01.12433	BOLT	4	螺栓M10x1.5x65
22	0.02.02430	BOLT	8	内六角平圆头螺钉M8x20
23	0.01.12133	BOLT	10	螺栓M10x1.25x95

8 BACK-WHEEL DRIVE



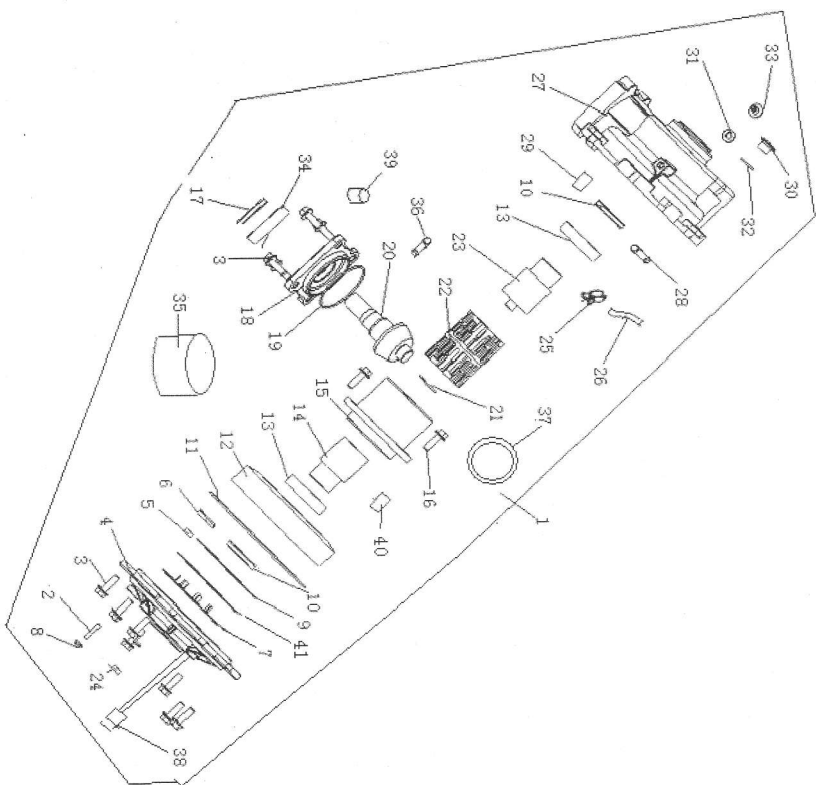
REF. No.	PART No.	DESCRIPTION	Q'TY	名称
1	3.1.01.0040	ROLL PIN	1	弹性销8x40
2	3.1.09.0010	GIMBAL JOINT	1	万向节III
3	0.01.01733	BOLT M10x1.25x60	2	螺栓M10x1.25x60
4	0.03.00530	NUT M10x1.25	4	螺母M10x1.25
5	4.2.09.0020	ABSORBER REAR(BLACK)	2	后减震组件(黑色)
	4.2.09.0010	ABSORBER REAR(RED)	2	后减震组件(红色)
6	0.02.04430	BOLT M12x25	8	内六角圆柱头螺钉M12x25
7	1.3.09.0010	STATOR	1	后桥左安装板
8	3.1.09.0020	BACK DRIVE SHAFT	2	内外球笼轴II
9	0.01.02730	BOLT M10x1.25x55	2	螺栓M10x1.25x55
10	8.2.01.0060	BALL NUT	1	球形螺母
11	0.04.01810	WASHER 16	1	弹垫16
12	0.04.02650	WASHER 16	1	垫片16x30x3
13	0.01.03150	BOLT	1	螺栓 M16x2x50
14	0.01.11933	BOLT	4	螺栓M10x1.25x65
15	8.8.09.0020	WASHER	8	垫片11x32x3
16	6.2.09.0010	BALANCER BUFFER	8	平衡器缓冲橡皮
17	0.01.01230	BOLT	2	螺栓M8x45
18	6.2.09.0020	BUSHING I	2	内轴套 I
19	1.4.09.0010	BALANCER TUBE	1	平衡器方管
20	1.4.09.0020	BALANCER BRACKET	2	平衡器安装支架
21	0.03.00130	NUT	2	螺母M8
22	1.4.09.0030	BALANCER COUPLING	2	平衡器联结杆

9 REAR GEAR-BOX



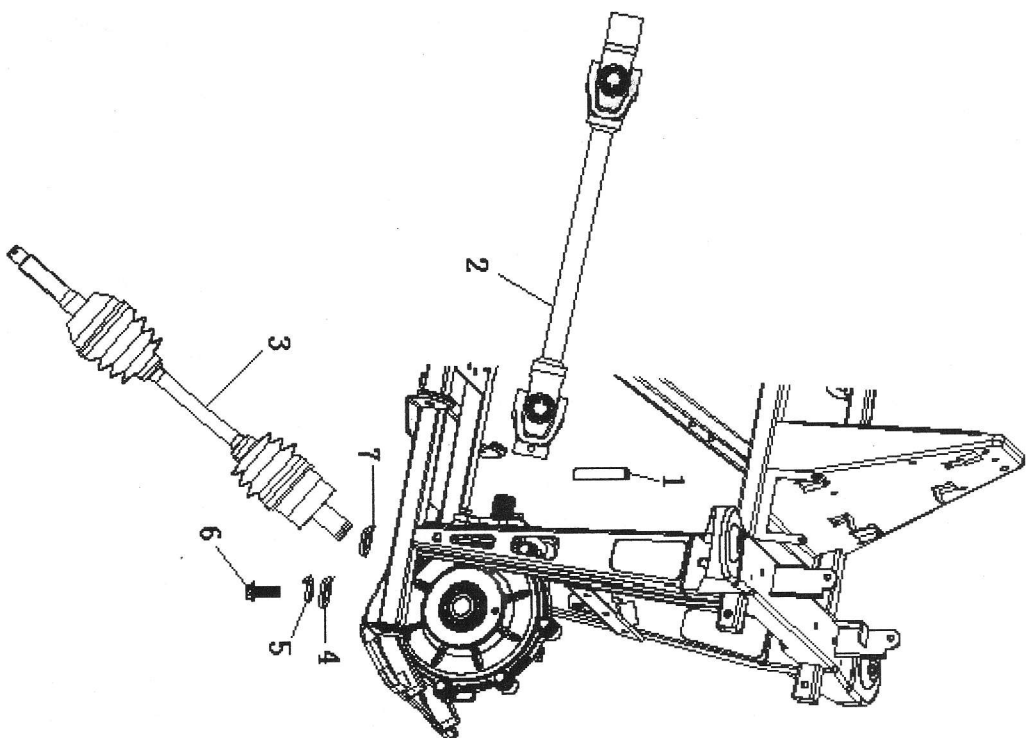
REF. No.	PART No.	DESCRIPTION	Q'TY	名称
1	3.3.09.0000	REAR GEARBOX ASSY	1	后桥总成
2	8.9.01.0020	SEAL 50X70X8	1	油封50X70X8
3	3.3.01.0010	OUTPUT COVER	1	后桥盖
4	3.2.01.0010	DOWEL PIN	1	定位销11x9
5	8.3.01.0020	O-RING 176X2.65	1	O型圈176X2.65
6	8.8.01.0040	WASHER	1	调整垫圈
7	8.8.01.0050	WASHER	1	垫圈D
8	3.3.01.0040	THRUST BUTTON	1	限位销4.8x12.8x12.8
9	0.05.00500	BEARING 110	2	轴承6010
10	3.3.09.0020	RING GEAR	1	后桥输出齿轮
11	3.3.01.0060	VENT	1	后桥通气管
12	3.3.01.0070	BEARING	1	通气嘴(弯)
13	3.3.01.0080	DRIVE HOUSING	1	后桥体
14	8.1.01.0060	OIL PLUG	2	后桥加放油螺栓M12.2x14
15	8.8.01.0060	WASHER	2	垫圈A
16	8.9.01.0020	SEAL 50X70X8	1	油封50X70X8
17	0.08.00600	BUSHING P23X20X15	1	轴套 P23X20X15
18	3.3.09.0010	PINION SHAFT	1	后桥输入齿轮
19	0.05.00600	BEARING 6306ST	1	轴承 6306F6
20	8.7.01.0010	BEAD FLANGE	1	挡圈30
21	8.3.01.0030	O-RING 79X4	1	O型圈79X2.65
22	3.3.01.0130	INPUT COVER	1	后桥前盖
23	0.01.03430	BOLT M8X28	10	螺栓 M8x28
24	3.4.01.0120	SEAL 25X35X7	1	油封25X35X7
25	0.01.01230	BOLT M8X45	2	螺栓 M8X45
26	6.4.01.0040	CLIP 10	2	卡箍10

10 FRONT GEAR-BOX



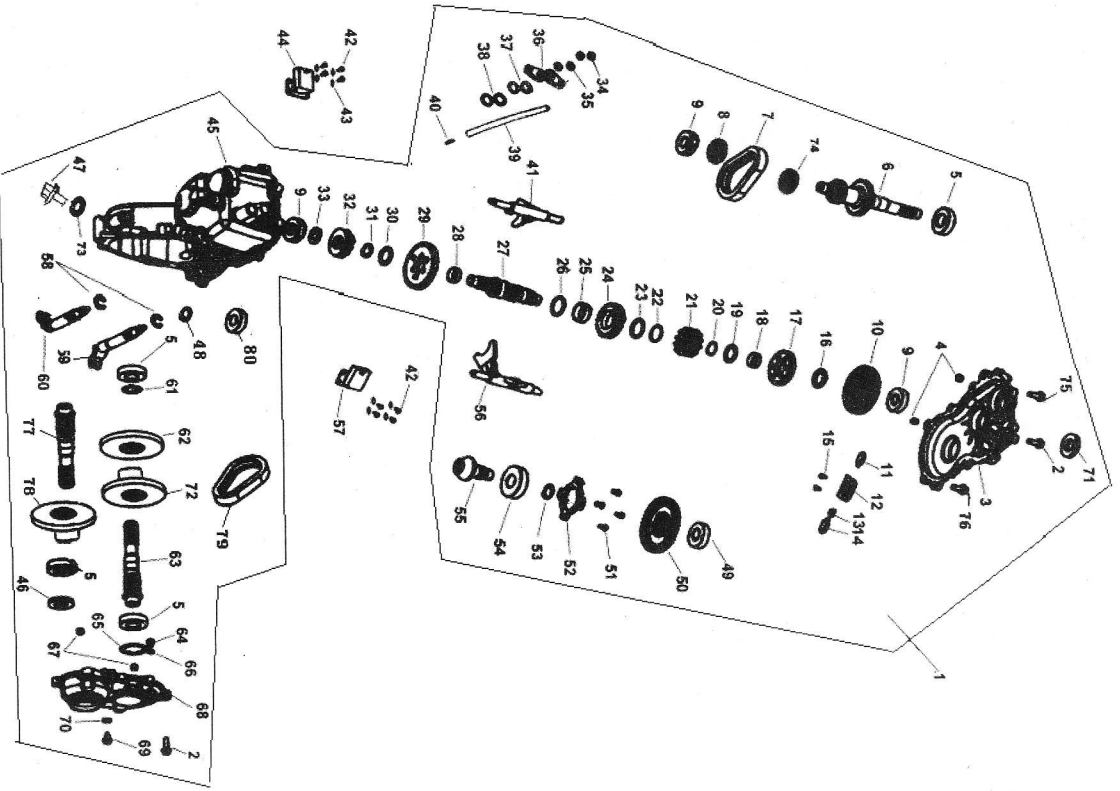
REF. No.	PART NO.	DESCRIPTION	QTY	名称
1	3.4.01.0001	FRONT GEAR-BOX	1	前桥总成 (防水)
2	0.02.02030	BOLT M5x25	1	内六角凹端紧定螺钉M5x25
3	0.01.05230	BOLT M8x25	11	螺栓M8X25
4	3.4.01.0010	FRONT GEAR-BOX COVER	1	前桥盖
5	3.4.01.0020	ADJUST CHUNK	1	调高块
6	3.4.01.0030	COPPER CHIP	1	顶片
7	3.4.01.0040	REVOLVE CHIP	1	拨片
8	0.03.02050	NUT M5	1	螺母M5
9	3.4.01.0060	BEAD FLANGE	1	挡圈Ø8
10	3.4.01.0070	SEAL 35x47x7	2	油封35X47X7
11	3.4.01.0080	O-RING 170x2.3	1	O形圈170X2.3
12	3.4.01.0280	OUTPUT GEAR	1	输出锥齿轮
13	0.05.02500	BEARING 6007	2	轴承6007
14	3.4.01.0100	INNER SPINDLE, RIGHT	1	右内轴
15	3.4.01.0110	CONJUNCTION BULK	1	连接座
16	0.02.02730	BOLT M8x20	6	内六角圆柱头螺钉M8X20
17	3.4.01.0120	SEAL 25X35X5	1	油封25X35X7
18	3.4.01.0130	INPUT GEAR COVER	1	前桥小盖
19	3.4.01.0140	O-RING 70x2.2	1	O形圈70X2.2
20	3.4.01.0150	INPUT GEAR	1	输入锥齿轮
21	3.4.01.0160	NEEDLE BEARING 17X30X2	1	滚针轴承17X30X2
22	3.4.01.0170	IMMOBILITY SHELF	1	保持架
23	3.4.01.0180	INNER SPINDLE, LEFT	1	左内轴
24	3.4.01.0190	WASHER 12	1	垫圈12
25	6.4.01.0040	CLIP 10	1	卡箍10
26	3.3.01.0060	VENT	1	后桥通气管
27	3.4.01.0200	DRIVE HOUSING	1	前桥体

11 FRONT-WHEEL DRIVE



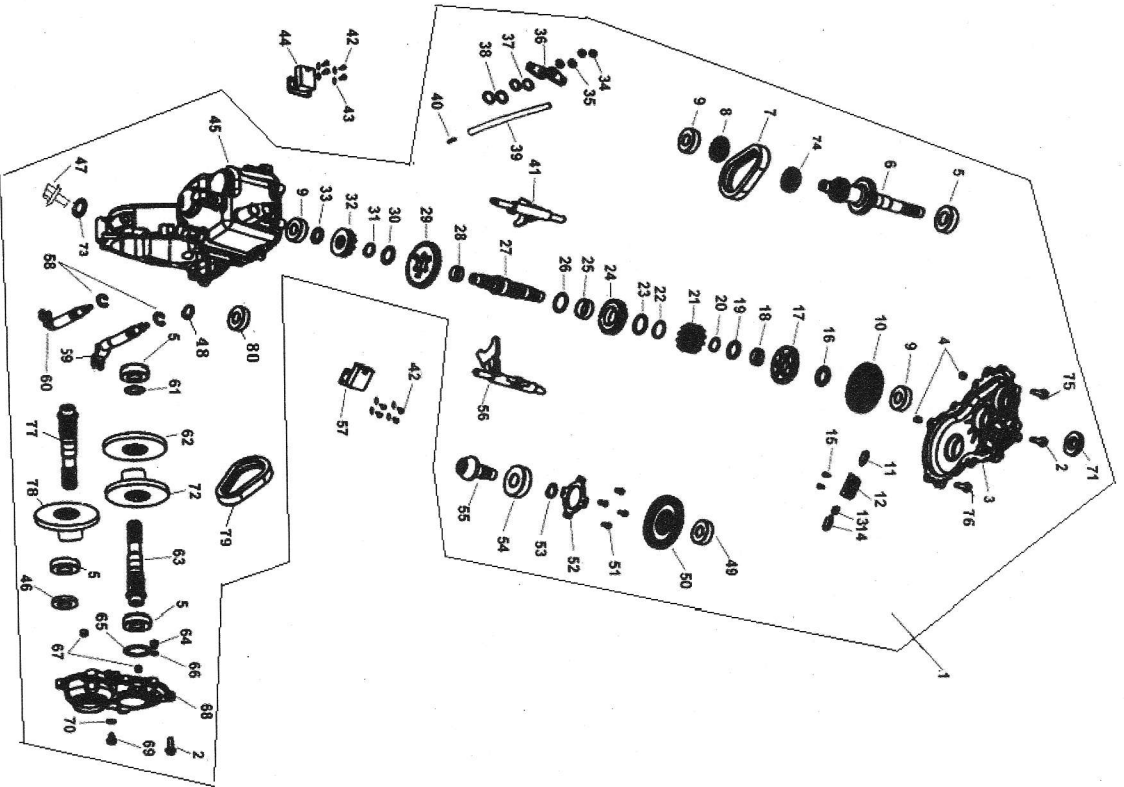
REF. No.	PART NO.	DESCRIPTION	Q'TY	名称
1	3.1.01.0040	ROLL PIN 8x40	1	弹性销8x40
2	3.1.01.0050	GIMBAL JOINT ASSY	1	万向节 II
3	4.1.01.0250	FRONT DRIVE SHAFT	2	内外球笼轴
4	0.04.00410	WASHER	4	垫圈 10
5	0.04.00810	WASHER	4	弹垫 10
6	8.1.01.0030	BOLT M10X25	4	A臂轴安装螺栓
7	4.1.01.0260	BEAD FLANGE	2	轴用钢丝挡圈 II

12 TRANSMISSION



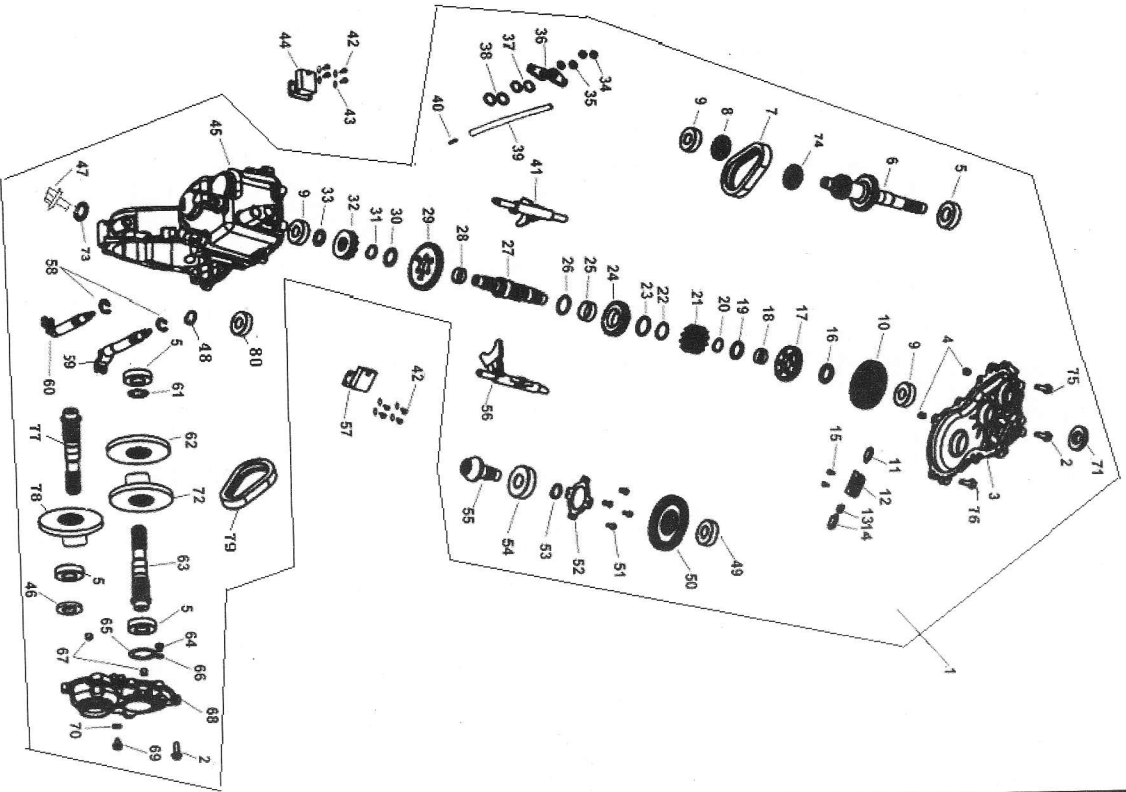
REF. NO.	PART NO	DESCRIPTION	QTY	名称
1	3.2.09.0001	TRANSMISSION ASSY	1	变速箱总成
2	0.01.03430	BOLT M8X28	17	螺栓 M8X28
3	3.2.01.0040	MAIN COVER	1	变速箱左盖
4	3.2.01.0010	DETENT PIN	2	定位销11x9
5	0.05.00700	BEARING 6205c3	4	轴承 6205C3
6	3.2.01.0051	INPUT SHAFT	1	主轴
7	3.2.01.0060	CHAIN	1	齿形链
8	3.2.01.0070	GEAR 16T	1	低速主动齿轮
9	0.05.00800	BEARING 6204	3	轴承 6204
10	3.2.01.0080	GEAR HELICAL 35T	1	过渡齿轮1
11	3.2.01.0090	INTERLOCK PIN	2	限位块
12	3.2.01.0100	INTERLOCK BRACKET	1	限位块压板
13	3.2.01.0110	SPRING	1	限位块弹簧
14	3.2.01.0090	INTERLOCK PIN	1	限位块
15	0.02.00630	SCREW M5X12	2	十字槽盘头螺钉 M5X12
16	8.8.01.0070	SPACER	1	垫片25.5A
17	3.2.01.0141	GEAR 31T	1	高速从动齿轮
18	8.4.01.0010	NEEDLE BEARING 25	1	滚针轴承25X29X10
19	8.8.01.0080	WASHER	1	垫片25.5B
20	0.04.01310	BEAD FLANGE	1	挡圈25x1.2
21	3.2.01.0170	SHIFTER GEAR(PINACOID)	1	双面换挡盘
22	0.04.01410	BEAD FLANGE	1	挡圈32
23	8.8.01.0090	WASHER	1	垫片32.5
24	3.2.01.0190	SPROCKET 24T	1	从动链轮
25	8.4.01.0020	NEEDLE BEARING 25	1	滚动轴承32x37x12.5
26	8.8.01.0090	WASHER	1	垫片32.5
27	3.2.01.0220	SHAFT	1	副轴

12 TRANSMISSION



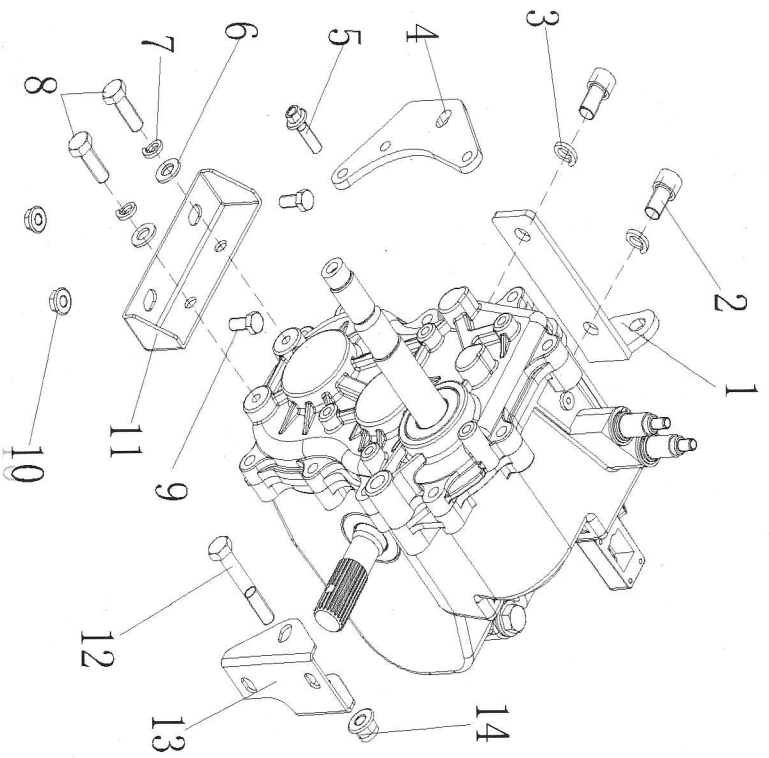
REF. NO.	PART NO.	DESCRIPTION	Q'TY	名称
28	8.4.01.0010	NEEDLE BEARING 25	1	滚针轴承25X29X10
29	3.2.01.0230	GEAR 35T	1	低速从动齿轮
30	8.8.01.0090	WASHER	1	垫片32.5
31	0.04.01310	BEAD FLANGE	1	挡圈25x1.2
32	3.2.01.0250	SHIFTER GEAR(MONOHEDRAL)	1	单面换挡盘
33	8.8.01.0100	WASHER	1	垫片20
34	0.03.00130	NUT M8	2	螺母M8
35	0.04.00310	WASHER 8	2	垫圈8
36	3.2.01.0200	SPLINE BOARD	2	花键板
37	0.04.01510	BEAD FLANGE	2	挡圈19
38	8.8.01.0110	WASHER	2	垫圈A
39	3.2.01.0290	VENT TUBE	1	变速箱通气管
40	3.2.01.0300	VENT TUBE FITTING	1	通气嘴
41	3.2.01.0310	SHIFT FORK HIGH/REVERSE	1	高速倒档拨叉
42	0.02.00130	SCREW M4	8	螺钉M4x10
43	0.04.01610	WASHER 4	8	垫圈4
44	5.3.01.0030	GEAR INDICATOR SWITCH, UP	1	上档显示开关
45	3.2.01.0321	GEARCASE, RH	1	变速箱组件
46	8.9.01.0050	SEAL 25X47X8	4	油封25X47X8
47	8.1.01.0170	BOLT	1	加油螺栓M12x1.25x27
48	0.06.00400	O-RING	2	O形圈14X2.65
49	0.05.00800	BEARING 6204C3	1	轴承 6204C3
50	3.2.01.0340	GEAR HELICAL 46T	1	过渡齿轮2
51	0.02.00430	SCREW M6X10	4	螺钉M6X10
52	3.2.01.0350	BEARING RETAINER PLATE	1	轴承挡板
53	8.7.01.0020	BEAD FLANGE	1	挡圈25x2
54	0.05.01000	BEARING 6305ST	1	轴承 6305p6

12 TRANSMISSION



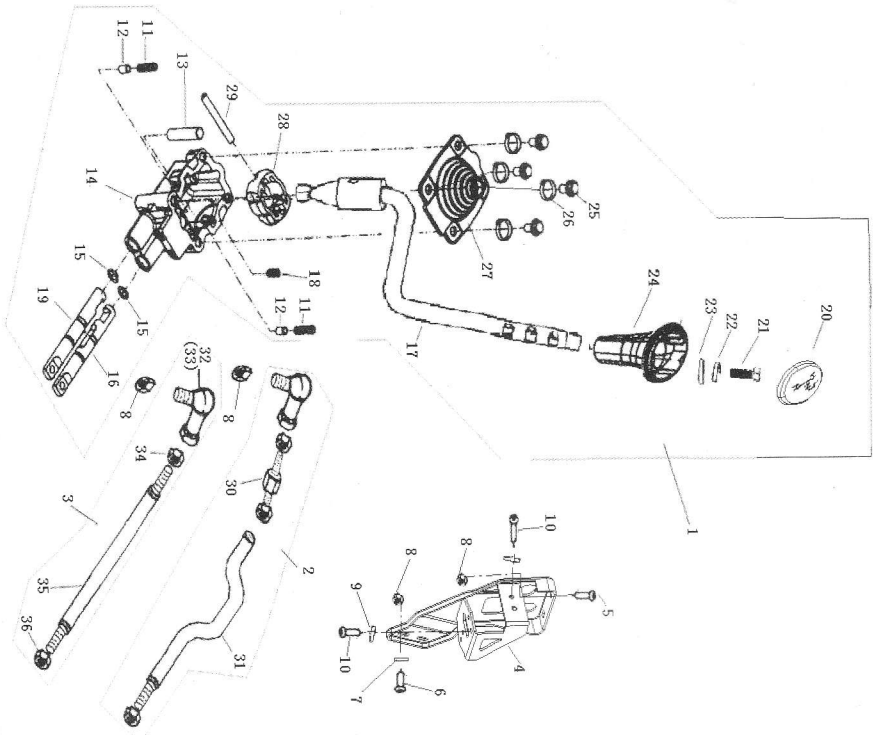
REF. No.	PART No.	DESCRIPTION	Q.TY	名称
55	3.2.01.0370	PINION SHAFT 10T	1	中间轴
56	3.2.01.0380	SHIFT FORK LOW	1	低速拨叉
57	5.3.01.0260	GEAR INDICATOR SWITCH,DOWN	1	下档显示开关
58	0.04.01910	BEAD FLANGE	2	开口挡圈15
59	3.2.01.0390	SHIFT ROD LOW	1	摇臂B
60	3.2.01.0400	SHIFT ROD HIGH/REVERSE	1	摇臂A
61	8.8.01.0120	WASHER	1	垫圈B
62	3.2.01.0420	GEAR	1	后驱动轴锥齿齿轮
63	3.2.09.0010	SHAFT REAR OUTPUT	1	后驱动轴
64	3.2.01.0440	THRUST BUTTON	1	限位销
65	8.8.01.0130	WASHER	1	垫圈C
66	8.8.01.0050	WASHER	1	垫圈D
67	3.2.01.0010	DETENT PIN	1	定位销11X9
68	3.2.01.0471	COVER	1	变速箱前盖
69	3.2.01.0480	DRAIN SCREW	1	放油螺塞组件
70	8.8.01.0140	WASHER B	1	铝垫B
71	8.9.01.0050	SEAL 25X47X8	4	油封25X47X8
72	3.2.01.0550	REAR OUTPUT SPROCKET	1	后驱动轴链轮
73	8.8.01.0060	WASHER A	1	铝垫A
74	3.2.01.0510	SPROCKET	1	小链轮
75	0.01.01130	BOLT M8X33	3	螺栓M8X33
76	0.01.03630	BOLT M8X28	1	螺栓M8X28
77	3.2.01.0530	SHAFT FRONT OUTPUT	1	前驱动轴
78	3.2.01.0540	FRONT OUTPUT SPROCKET	1	前驱动轴链轮
79	3.2.01.0520	CHAIN	1	滚子链
80	3.2.01.0560	BUSHING P22x19x20	1	轴套P22x19x20

13 SUPPORT BRACKET



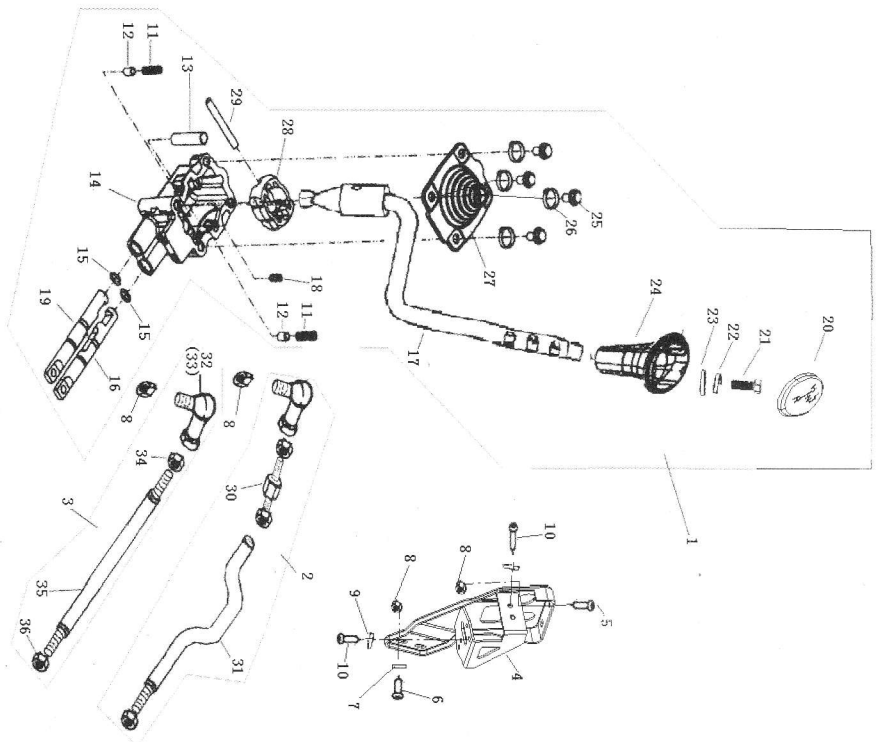
REF. No.	PART No.	DESCRIPTION	QTY	名称
1	2.7.01.0010	GEAR BOX BRACKET RIGHT	1	右摇臂连接板
2	0.02.00330	BOLT M12X20	2	内六角圆柱头螺栓 M12X20
3	0.04.00910	WASHER 12	2	弹垫12
4	2.7.01.0020	GEAR BOX BRACKET LEFT	1	左摇臂连接板
5	0.01.01130	BOLT M8X33	3	螺栓 M8X33
6	0.04.00410	WASHER	2	垫圈10
7	0.04.00810	WASHER10	2	弹垫10
8	0.01.01930	BOLT M10X20	2	螺栓 M10X20
9	0.01.00930	BOLT M8X20	2	螺栓 M8X20
10	0.03.00130	NUT M8	2	螺母 M8
11	2.7.01.0030	GEAR BOX BRACKET DOWN	1	变速箱左下安装板
12	0.01.02930	BOLT	2	螺栓 M10X1.25X68
13	2.7.01.0040	GEAR BOX BRACKET UP	1	变速箱上安装板
14	0.03.00530	NUT M10	2	螺母 M10X1.25

14 SHIFT ROD



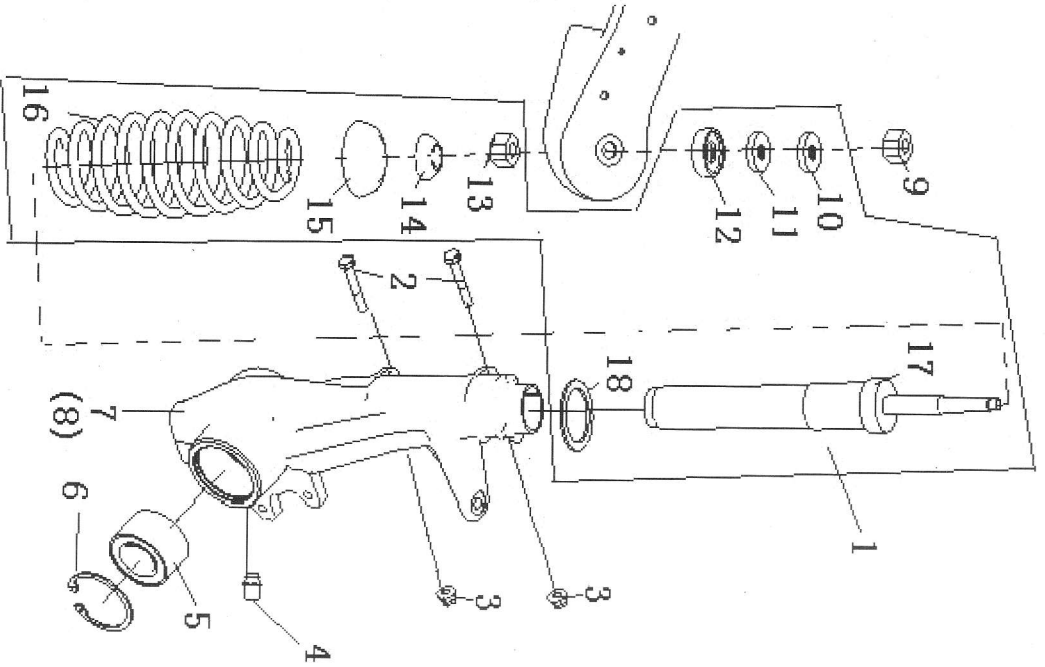
REF. No.	PART No.	DESCRIPTION	QTY	名称
1	4.6.01.1000	SHIFTER ASSY MOUNTING	1	换挡器
2	4.6.01.4000	SHIFTER MOUNTING ROD B	1	换挡器拉杆B
3	4.6.01.3000	SHIFTER MOUNTING ROD A	1	换挡器拉杆A
4	4.6.01.0020	SHIFTER MOUNTING BRACKET	1	换挡器安装板组件
5	0.01.02530	BOLT M6X40	2	螺栓 M6X40
6	0.01.02430	BOLT M6X35	2	螺栓 M6X35
7	0.04.00110	WASHER 6	1	垫片6
8	0.03.00330	NUT M6	8	螺母M6
9	0.04.00610	WASHER 6	4	弹垫6
10	0.01.00430	BOLT M6X15	4	螺栓 M6X15
11	4.6.01.1080	BIG SPRING	2	大弹簧
12	4.6.01.1090	DETENT PIN	2	定位销
13	4.6.01.1100	DOWEL PIN	1	限位销
14	4.6.01.1110	SHIFTER PEDESTAL	1	换挡器底座
15	8.3.01.0040	O-RING	2	O型圈9.4XL.6
16	4.6.01.1130	SELECTOR SLIDES HIGH	2	高速滑杆
17	4.6.01.3020	SHIFT LEVER	1	换挡杆
18	4.6.01.1070	SMALL SPRING	1	小弹簧
19	4.6.01.1140	SELECTOR SLIDES LOW	1	低速滑杆
20	4.6.01.1010	BOOT	1	握手盖
21	0.01.00430	BOLT M6X15	2	螺栓 M6X15
22	0.04.00610	WASHER 6	1	弹垫6
23	0.04.00110	WASHER 6	1	垫片6
24	4.6.01.1020	KNOB	1	球形握把手
25	0.01.06920	BOLT M6X15	4	螺栓 M6x12
26	0.04.00110	WASHER 6	1	垫片6

14 SHIFT ROD



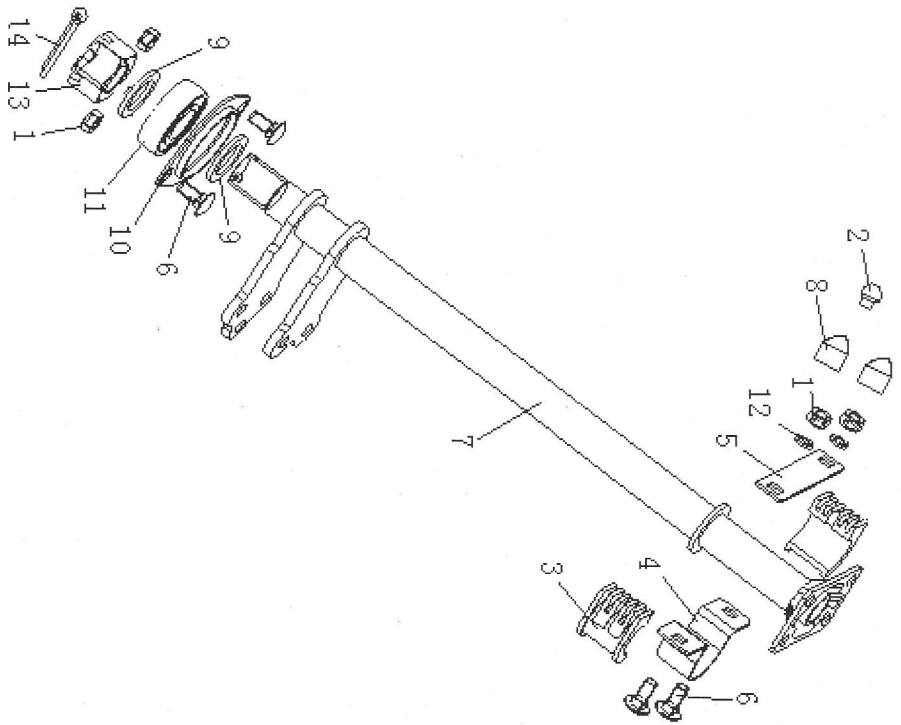
REF. No.	PART No.	DESCRIPTION	Q'TY	名称
27	4.6.01.1040	SERUM CAP	1	橡胶上盖组件
28	4.6.01.1050	IMMOBILITY ball	1	固定球
29	4.6.01.1060	PIN	1	销
30	4.6.01.4010	SHIFT ROD COUPLER	1	倒档拉杆A
31	4.6.01.4020	SHIFT ROD HIGH/REVERSE	1	倒档拉杆B
32	4.6.01.3010	SHIFT ROD END 2	2	换档接头2
33	4.6.01.3040	SHIFT ROD END 1	2	换档接头1
34	0.03.01420	NUT M6	3	螺母 M6
35	4.6.01.3020	SHIFT ROD	1	换档杆
36	8.2.01.0070	NUT M6	2	拉杆锁紧螺母

15 SHOCK ABSORBER FRONT



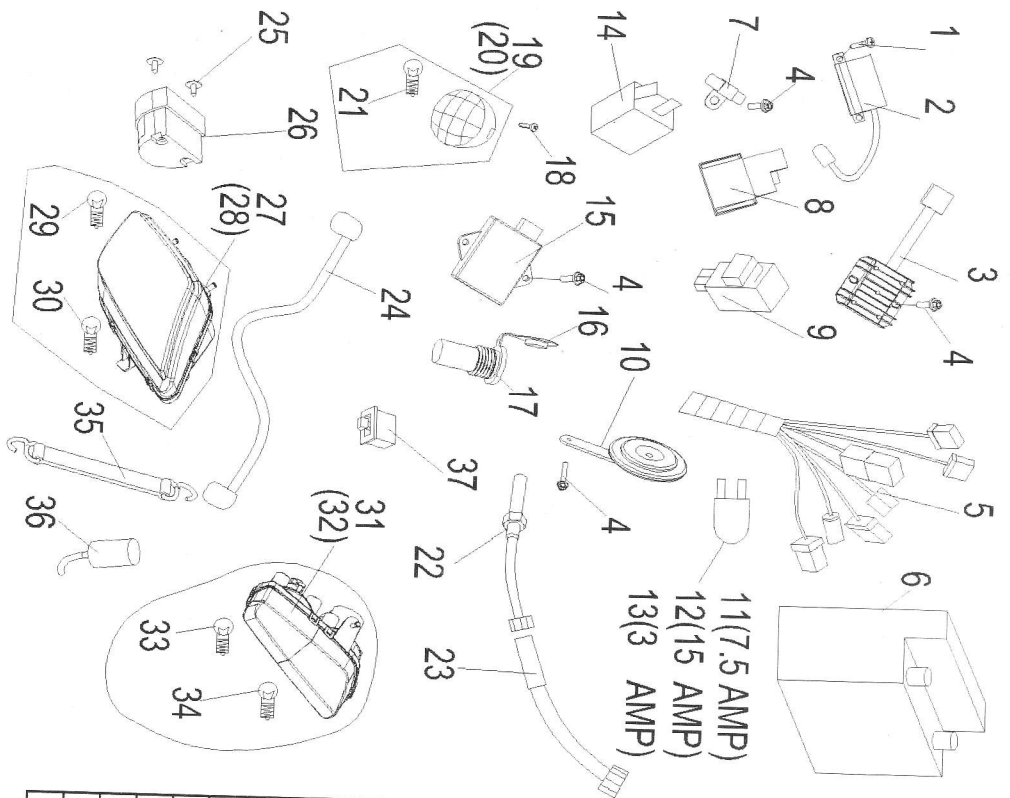
REF. No.	PART No.	DESCRIPTION	QTY	名称
1	4.2.01.1130	AMORTISSEUR, FRONT (BLACK)	2	前减震器组件(黑)
	4.2.01.1131	AMORTISSEUR, FRONT (RED)	2	前减震器组件(红)
2	0.01.02630	BOLT M8X55	4	螺栓 M8X55
3	0.03.00130	NUT M8	4	螺母 M8
4	8.5.01.0010	GREASE FITTING	2	油杯 M6
5	0.05.00400	BEARING	2	轴承DAC35640037
6	0.04.01210	BEAD FLANGE	2	挡圈65
7	4.2.01.1140	STRUT BODY LEFT	1	前减震器左支撑
8	4.2.01.1150	STRUT BODY RIGHT	1	前减震器右支撑
9	0.03.01530	NUT M14X1.5	2	螺母 M14X1.5
10	8.8.01.0150	WASHER 14	2	垫圈14
11	4.2.01.1050	SPACER RUBBER	2	缓冲垫
12	4.2.01.1060	UPPER PIVOT BALL	2	球碗A
13	8.2.01.0080	NUT M14X1.5	2	螺母M14X1.5
14	4.2.01.1080	LOWER PIVOT BALL	2	球碗B
15	4.2.01.1090	SPRING RETAINER	2	前减震弹簧座
16	4.2.01.1100	SPRING (BLACK)	2	前减震簧(黑)
	4.2.01.1101	SPRING (RED)	2	前减震簧(红)
17	4.2.01.1110	STRUT BUMPER	2	前减震器衬液筒组件
18	8.8.01.0160	WASHER	2	大垫圈

15 STEERING COLUMN



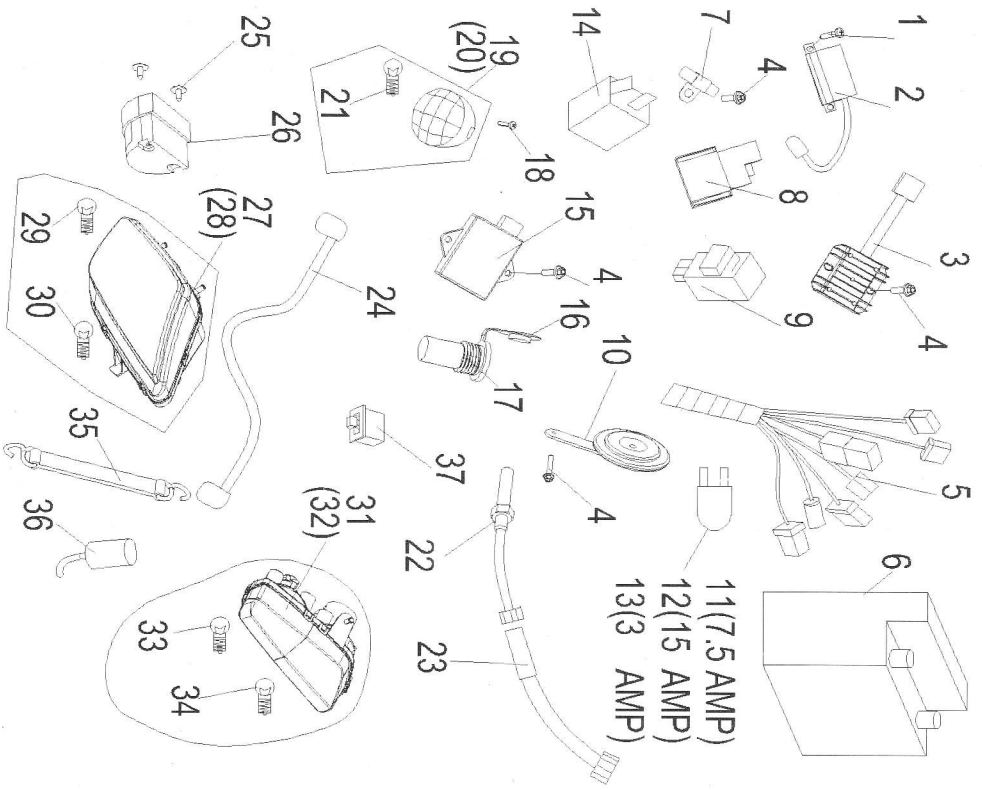
REF. No.	PART No.	DESCRIPTION	QTY	名称
1	0.03.00130	NUT M8	4	螺母 M8
2	8.5.01.0010	GREASE FITTING	1	油杯 M6
3	1.2.01.0010	BUSHING	2	安装套
4	1.2.01.0020	STEERING CLAMP REAR	1	方向柱上安装固定座
5	1.2.01.0030	STEERING CLAMP FRONT	1	方向柱上缓冲垫
6	8.1.01.0070	BOLT	4	异形螺栓
7	1.2.01.0050	STEERING COLUMN	1	方向柱焊接组件
8	1.2.01.0060	CUP	2	保护罩
9	8.8.01.0250	WASHER	2	垫圈25
10	1.2.01.0080	BEARING RETAINER	1	轴承盖帽
11	0.05.00300	BEARING	1	轴承CS205LU
12	0.04.00710	WASHER	2	弹垫8
13	0.03.01230	RETAINER NUT	1	开槽螺母 M24X2
14	0.08.00400	COTTER PIN	1	开口销 5X40

17 ELECTRICAL SYSTEM



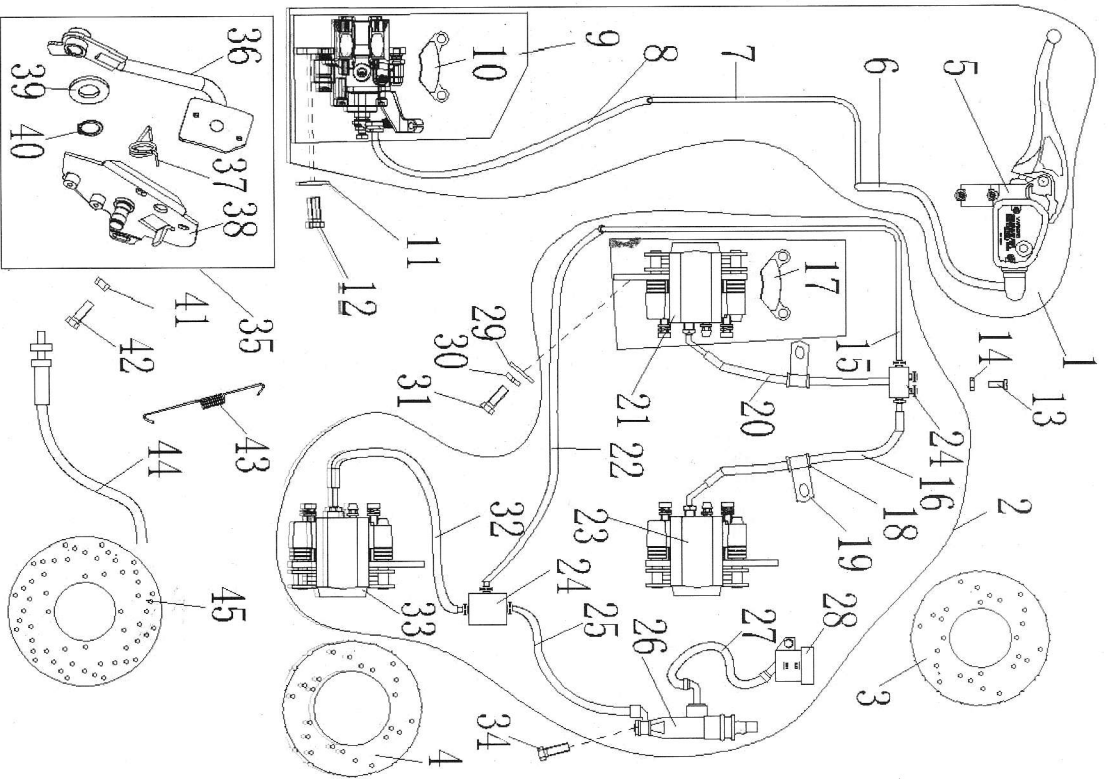
REF. NO.	PART NO.	DESCRIPTION	QTY	名称
1	0.02.00530	BOLT M6X22	2	十字槽盘头螺钉 M6x22
2	5.3.01.0240	IGNITION COIL AND WIRE	1	高压包
3	5.3.01.0081	REGULATOR RECTIFIER	1	整流稳压器件 (防水)
4	0.01.01830	BOLT M6X20	5	螺栓M6X20
5	5.3.01.0064	WIRING HARNESS	1	电缆总成 (欧标, 防水)
6	5.3.01.0140	BATTERY	1	电瓶12V 14Ah
7	5.3.01.0280	RESISTANCE	1	电阻
8	5.3.01.0040	STARTER RELAY	1	起动机继电器
9	5.3.01.0052	REVERSE SPEED LIMITER	1	限速器 (防水)
10	5.3.01.0110	HORN	1	喇叭
11	5.3.01.0150	75 AMP FUSE	1	75安培保险丝
12	5.3.01.0160	15 AMP FUSE	2	15安培保险丝
13	5.3.01.0170	3 AMP FUSE	1	3安培保险丝
14	5.3.01.0210	CAPACITOR	1	电容器
15	5.3.01.0220	TCI	1	点火器
16	5.3.01.0320	COVER OF CHARGE	1	充电插口胶盖
17	5.3.01.0301	CHARGE FAUCET	1	充电插口
18	0.02.00730	BOLT M6X15	2	十字槽盘头螺钉M6X15
19	5.2.01.0050	REAR BLINKER RIGHT	1	右前转向灯
20	5.2.01.0060	REAR BLINKER LEFT	1	左前转向灯
21	5.2.01.0150	REAR BLINKER BULB	2	转向灯灯泡
22	5.3.01.0251	GEAR SENSOR	1	齿轮传感器
23	5.3.01.0311	CONNECTING LINE, SENSOR	1	齿轮传感器连接线
24	5.3.01.0230	POSITIVE CABLE	1	电瓶火线
25	0.02.00930	BOLT ST4.2X12	2	十字槽盘头自攻螺钉 ST4.2X12
26	5.2.01.0071	LICENSE PLATE LIGHT	1	牌照灯 (防水)
27	5.2.01.0013	HEAD LIGHT, FR,R	1	右前大灯 (欧标, 防水)

17 ELECTRICAL SYSTEM



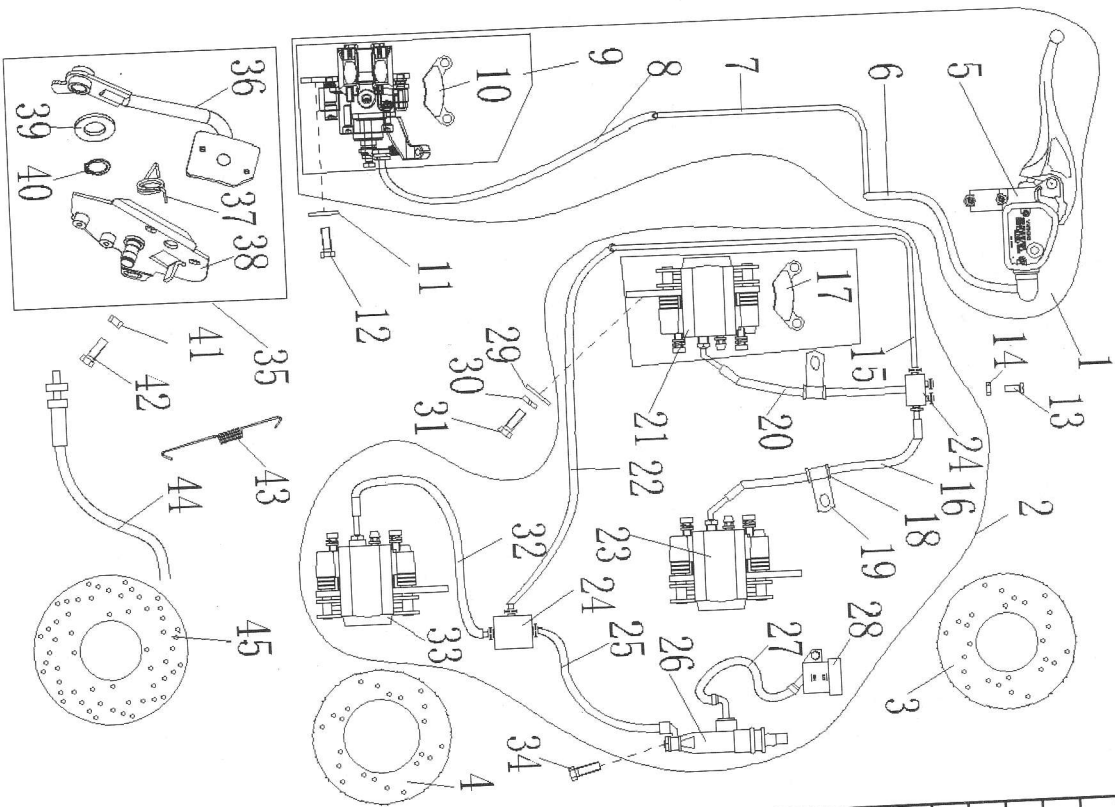
REF. No.	PART No.	DESCRIPTION	QTY	名称
28	5.2.01.0023	HEAD LIGHT, FR, L	1	左前大灯 (欧标, 防水)
29	5.2.01.0100	HEADLIGHT BULB (big)	2	大前大灯灯泡
30	5.2.01.0130	HEADLIGHT BULB (small)	2	小前大灯灯泡
31	5.2.01.0033	TAILLIGHT, L	1	左后尾灯 (欧标, 防水)
32	5.2.01.0043	REAR LIGHT, R	1	右后尾灯 (欧标, 防水)
33	5.2.01.0120	TAILLIGHT BULB (big)	2	大后尾灯灯泡
34	5.2.01.0140	TAILLIGHT BULB (small)	2	小后尾灯灯泡
35	6.2.01.0500	BATTERY RIBBON	1	电瓶扎带
36	5.3.01.0180	FLASHER RELAY ASSAY	1	闪光器
37	5.3.01.0071	HAZARD LIGHT SWITCH	1	危急开关 (防水)

18 BRAKING SYSTEM



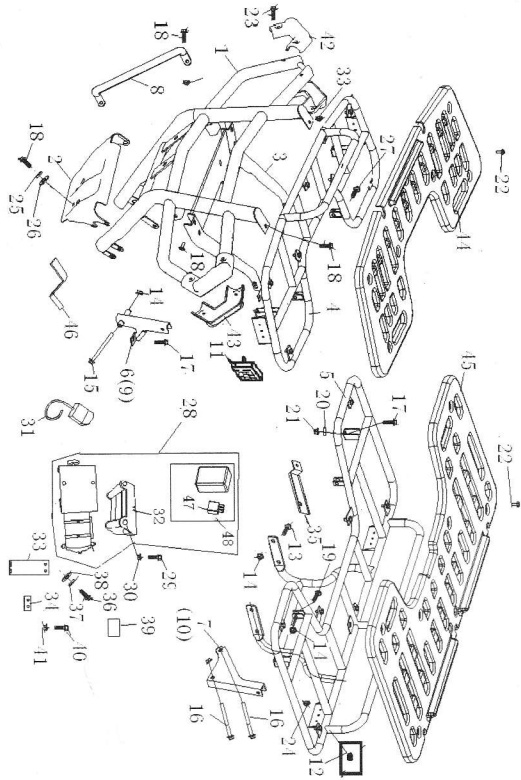
REF. No.	PART No.	DESCRIPTION	QTY	名称
1	4.3.09.1011	GRIP BRAKE	1	手刹组件 (欧标, 防水)
2	4.3.09.1021	FOOT BRAKE	1	脚刹组件 (欧标, 防水)
3	4.3.01.3081	FRONT DISC BRAKE PLATE	2	前碟刹盘 (新状态)
4	4.3.09.1030	REAR DISC BRAKE PLATE, RIGHT	1	左右碟刹盘22
5	4.3.09.0010	MAIN BRAKE PUMP	1	主制动泵
6	4.3.01.3021	HAND BRAKE HOSE I	1	手刹软管 I
7	4.3.09.0020	HAND BRAKE STEEL TUBE	1	手刹钢管
8	4.3.01.3041	HAND BRAKE HOSE	1	手刹软管
9	4.3.01.3051	REAR PUMP LEFT	1	左右碟刹泵
10	4.3.01.3370	BACK FRICTIONAL PLATE	2	后碟刹摩擦片
11	0.04.00410	WASHER 10	2	垫圈 10
12	0.01.02030	BOLT M10X1.25X20	2	螺栓 M10X1.25X20
13	0.02.04330	BOLT	4	十字槽沉头螺钉 M5X35
14	0.03.00430	NUT M5	4	螺母 M5
15	4.3.01.3030	REAR BRAKE HOSE	1	后刹钢管
16	4.3.01.3190	FRONT BRAKE HOSE RIGHT	1	右前刹油管
17	4.3.01.3350	FRONT FRICTIONAL PLATE	6	前碟刹摩擦片
18	4.3.01.3210	RUBBER TUBE	2	橡胶护套
19	4.3.01.3200	FIXUP HOSE CARD	2	软管固定卡
20	4.3.01.3220	FRONT BRAKE HOSE LEFT	1	左前刹油管
21	4.3.01.3070	BRAKE CALIPER LEFT	1	左前制动卡钳
22	4.3.09.0030	FOOT BRAKE HOSE I	1	脚刹软管 I
23	4.3.01.3180	BRAKE CALIPER RIGHT	1	右前制动卡钳
24	4.3.09.0050	BRAKE LINE COUPLER III	2	三通 III
25	4.3.09.0060	FOOT BRAKE HOSE III	1	脚刹软管 III
26	4.3.01.3130	FOOT BRAKE PUMP	1	脚刹泵
27	4.3.01.3150	OIL CUP HOSE	1	油杯管

18 BRAKING SYSTEM



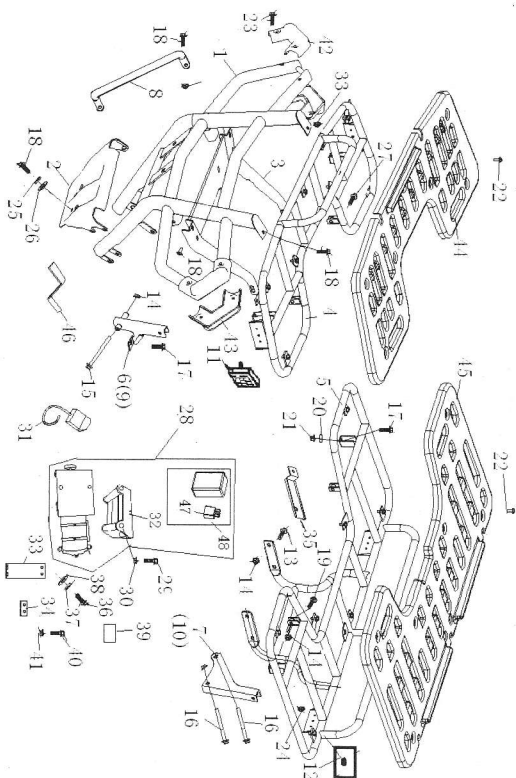
REF. No.	PART No.	DESCRIPTION	QTY	名称
28	4.3.01.3170	OIL CUP	1	碟刹油杯
29	0.04.00310	WASHER 8	6	垫片8
30	0.04.00710	WASHER 8	6	弹垫8
31	0.01.02133	BOLT M8X25	6	螺栓M8X25
32	4.3.09.0040	FOOT BRAKE HOSE II	1	脚刹软管 II
33	4.3.01.3100	FRONT BRAKE PUMP RIGHT	1	右后碟刹泵
34	0.01.00630	BOLT M6X20	3	螺栓M6X20
35	1.5.01.3000	BRAKE PEDAL ASSY	1	脚刹踏板焊接组件
36	1.5.01.3030	BRAKE PEDAL	1	脚刹踏板扭簧
37	1.5.01.3010	RETURN SPRING	1	脚刹踏板安装板
38	1.5.01.3020	FOOT BRAKE MOUNTING PLATE	1	垫圈 14.5
39	8.8.01.0260	WASHER	1	轴用弹性挡圈
40	0.04.01010	BEAD FLANGE	2	螺母M6
41	0.03.00330	NUT M6	3	螺栓M6X20
42	0.01.00630	BOLT M6X20	1	刹车拉簧
43	4.3.01.0120	SPRING, STOP SWITCH	1	脚刹开关 (防水)
44	4.3.01.0081	STOP SWITCH REAR	1	
45	4.3.09.1040	REAR DISC BRAKE PLATE, LEFT	1	左后碟刹盘19

19 BUMPER & RACK



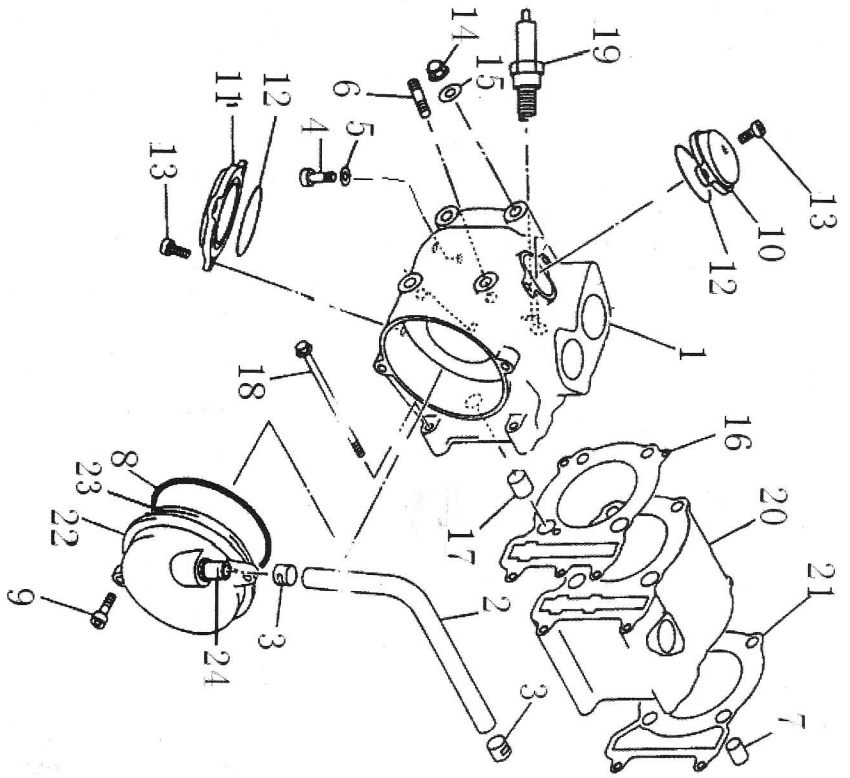
REF. No.	PART NO.	DESCRIPTION	QTY	名称
1	1.4.09.0060	BUMPER	1	保险杠组件
2	1.4.09.0120	CONNECTIVE	1	保险杠下安装板
3	1.4.09.0090	CONNECTON BRACKET	1	支架焊接总成
4	1.4.09.0071	FRONT FRAME	1	前货架组件 (欧标)
5	1.4.09.0080	REAR FRAME	1	后货架组件
6	1.4.01.0070	TRESTLE 2 LEFT	1	前货架左安装支架
7	1.4.09.0130	TRESTLE 3 LEFT	1	后货架左安装板
8	1.4.01.0090	PROTECT POLE	2	水箱防护支架
9	1.4.01.0100	TRESTLE 2 RIGHT	1	前货架右安装支架
10	1.4.01.0100	TRESTLE 3 RIGHT	1	后货架右安装板
11	5.2.01.0110	REFLECTOR(YELLOW)	2	后反射器(黄色)
12	5.2.01.0090	REFLECTOR(RED)	2	后反射器(红色)
13	0.01.01230	BOLT M8X45	4	螺栓 M8X45
14	0.03.00130	NUT M8	20	螺母 M8
15	0.01.01530	BOLT M8X90	2	螺栓 M8X90
16	0.01.01330	BOLT M8X68	4	螺栓 M8X68
17	0.01.00630	BOLT M6X20	8	螺栓 M6X20
18	0.01.00930	BOLT M8X20	12	螺栓 M8X20
19	0.01.01130	BOLT M8X33	2	螺栓 M8X33
20	0.04.00110	WASHER 6	4	垫圈6
21	0.03.00330	NUT M6	4	螺母 M6
22	8.1.01.0010	BOLT M6X20	14	安装螺栓
23	8.1.09.0010	BOLT M6x48	4	安装螺栓6x48
24	0.03.00430	NUT M5	4	螺母M5
25	0.04.00310	WASHER 8	2	垫片8
26	0.04.00710	WASHER 8	2	弹垫8

19 BUMPER & RACK



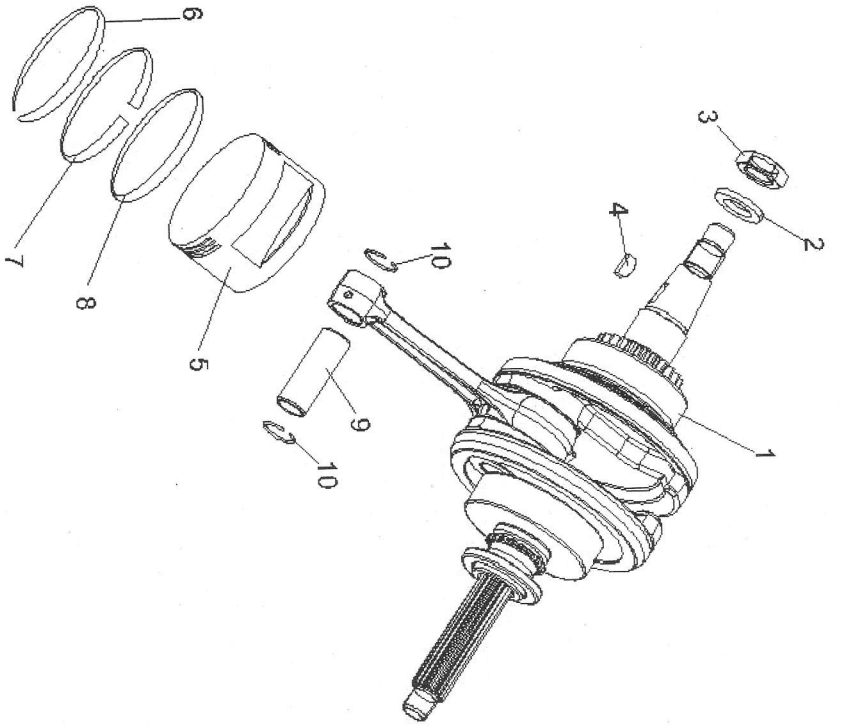
REF. No.	PART NO.	DESCRIPTION	QTY	名称
27	0.01.01030	BOLT M8X30	2	螺栓 M8X30
28	5.3.01.0090	RETRACTOR	1	牵引机总成
29	0.01.00930	BOLT M8X20	4	螺栓M8X20
30	0.03.00130	NUT M8	4	螺母M8
31	5.3.01.0361	RETRACTOR SWITCH	1	牵引器开关
32	5.3.01.0100	GUIDE SLOT	1	牵引线导引器
33	5.3.01.0420	PLANK CONTROL	1	牵引机控制盒支架
34	5.3.01.0430	STATOR CONTROL	1	牵引机控制盒固定板
35	1.4.01.0120	TAILLIGHT STRENGTHEN	2	尾灯加强板
36	0.01.00430	BOLT M6X15	2	螺栓 M6X15
37	0.04.00610	WASHER 6	2	弹垫6
38	0.04.00110	WASHER 6	2	垫片6
39	2.9.01.0090	MOUNTING PAD	1	油箱缓冲海棉垫50X22X5
40	0.01.00330	BOLT M6X12	2	螺栓 M6X12
41	0.03.00230	NUT M6	2	螺母 M6 (防滑)
42	1.4.09.0100	BUMPER ADORNING I	2	保险杠装饰盖 I
43	1.4.09.0110	BUMPER ADORNING II	2	保险杠装饰盖 II
44	1.4.09.0040	FRONT FRAME COVER BOARD	1	前货架上盖
45	1.4.09.0050	REAR FRAME COVER BOARD	1	后货架上盖
46	5.3.01.0380	SWITCH BRACKET	1	牵引器开关安装支架
47	5.3.01.0094	CONTROL_RETRACTOR	1	牵引机控制盒
48	5.3.01.0093	RELAY_CONTROL	2	牵引机控制盒继电器

20 CYLINDER



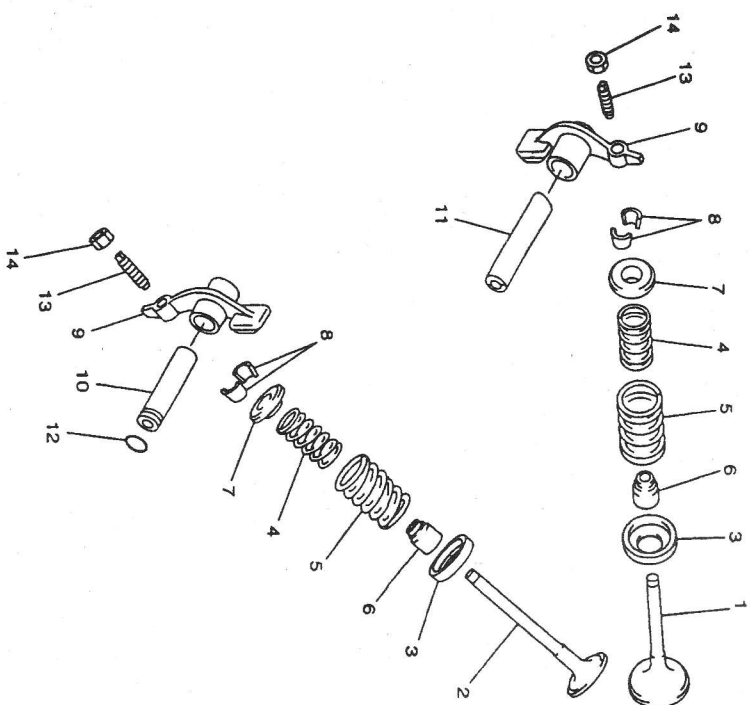
REF. No.	PART NO.	DESCRIPTION	QTY	名称
1	2.1.01.1010	CYLINDER HEAD ASSY	1	汽缸头组件
2	2.1.01.0430	PIPE 1	1	呼吸管
3	6.4.01.0090	HOSE CLAMP 12	2	卡箍 Φ12
4	0.01.00330	BOLT M6X12	1	螺栓 M6X12
5	8.8.01.0180	GASKET 6	1	垫圈6
6	0.01.03820	BOLT M8X36.5	2	双头螺栓 M8X36.5
7	2.1.01.0420	DETENT PIN 8X14	2	定位销10X14
8	8.3.01.0050	O-RING 95X3.3	1	O型圈95X3.3
9	0.02.01240	BOLT	2	内六角螺栓 M6X20
10	2.1.01.0360	VALVE COVER INTAKE	1	进气门盖
11	2.1.01.0370	VALVE COVER EXHAUST	1	排气门盖
12	8.3.01.0060	O-RING 57.5X2.3	2	O型圈57.5X2.3
13	0.02.01240	BOLT	5	内六角螺栓M6X20
14	8.2.01.0090	NUT	4	盖型螺母M8
15	8.8.01.0170	WASHER	4	垫圈8
16	2.1.01.0380	GASKET CYLINDER HEAD1	1	缸盖垫173
17	2.1.01.0390	PIN DOWEL 10X16	2	缸盖销14X16
18	8.1.01.0080	BOLT	2	螺栓M6X120
19	2.1.01.0570	PLUG SPARK(NGK DR8EA)	1	火花塞DR8EA
20	2.1.01.0400	CYLINDER (1)	1	缸体 (1组)
	2.1.01.0401	CYLINDER (2)	1	缸体 (2组)
21	2.1.01.0410	GASKET CYLINDER	1	缸体垫173
22	2.1.01.3020	BREATHER ASSY	1	呼吸盘盖
23	2.1.01.3010	BREATHER I	1	呼吸盘 I
24	2.1.01.3030	TUBE TIE-IN	1	管接头

21 CRANKSHAFT COMP



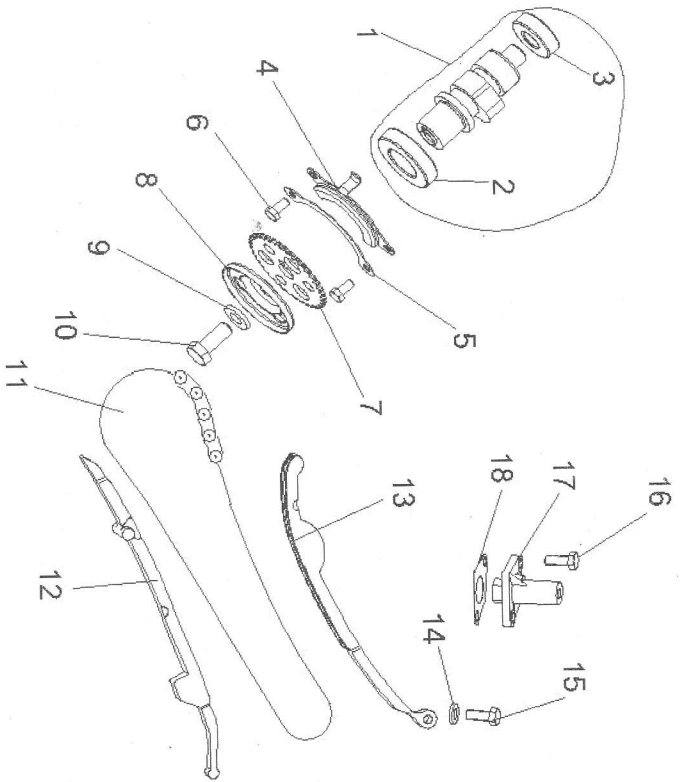
REF. No.	PART NO.	DESCRIPTION	QTY	名称
1	2.1.01.0010	CRANKSHAFT ASSY	1	曲轴连杆组件
2	8.2.01.0100	NUT M16X1	1	锁紧螺母M16X1
3	8.8.01.0190	WASHER	1	垫圈16
4	2.1.01.0020	KEY WOODRUFF	1	半圆键
5	2.1.01.0060	PISTON (YELLOW)	1	活塞 (黄色)
	2.1.01.0061	PISTON (BLUE)	1	活塞 (蓝色)
6	2.1.01.0040	1ST PISTON RING	1	第一道活塞环
7	2.1.01.0050	2ND PISTON RING	1	第二道活塞环
8	2.1.01.0030	OIL SUPPLY RING	1	组合油环
9	2.1.01.0180	PISTON PIN	1	活塞销
10	8.7.01.0030	BEAD FLANGE	2	活塞销挡圈

21 VALVE



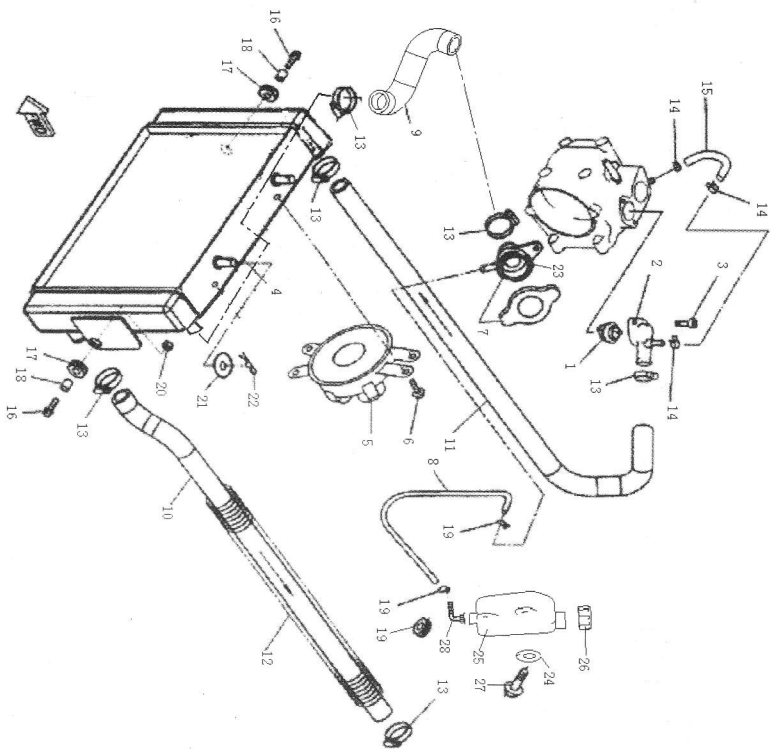
REF. No.	PART NO.	DESCRIPTION	Q'TY	名称
1	2.1.01.0440	INTAKE VALVE	1	进气门
2	2.1.01.0450	EXHAUST VALVE	1	排气门
3	2.1.01.0460	VALVE SPRING RETAINER,DOWN	2	气门弹簧下座
4	2.1.01.0470	INNER VALVE SPRING	2	气门内弹簧
5	2.1.01.0480	OUTER VALVE SPRING	2	气门外弹簧
6	2.1.01.0490	SEAL	2	气门杆油封组件
7	2.1.01.0500	VALVE SPRING RETAINER,UP	2	气门弹簧上座
8	2.1.01.0510	VALVE COLLET	4	气门锁夹
9	2.1.01.0520	ROCKER ARM VALVE	2	气门摇臂组件
10	2.1.01.0530	EXHAUST ROCKER SHAFT	1	排气门摇臂轴
11	2.1.01.0540	INTAKE ROCKER SHAFT	1	进气门摇臂轴
12	8.3.01.0140	O-RING 8.8×1.8	1	O型圈 8.8×1.8
13	2.1.01.0550	VALVE ADJUSTING SCREW	2	气门调节螺钉
14	2.1.01.0560	NUT M6X0.75	2	气门调节螺母M6X0.75

22 CAMSHAFT CHAIN



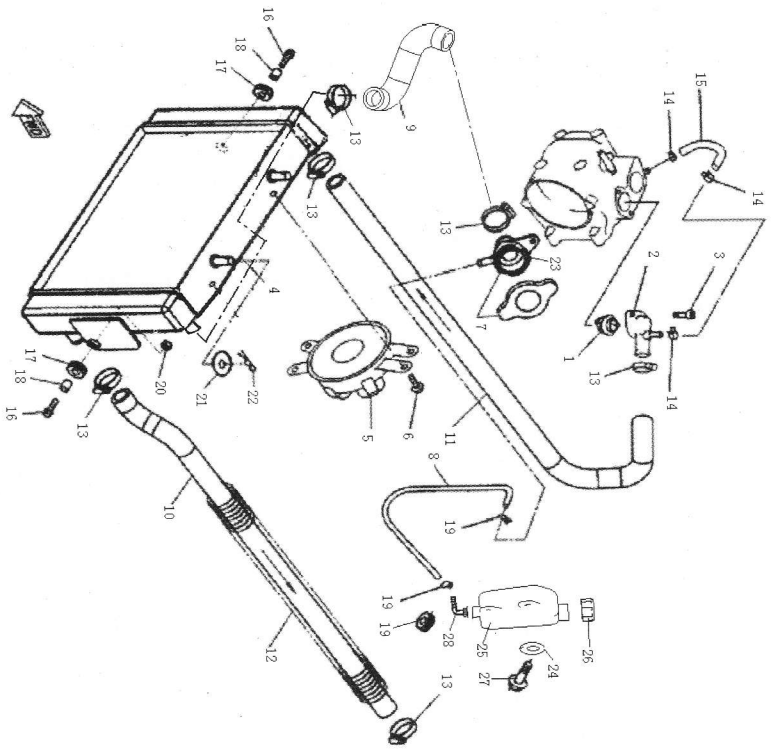
REF. No.	PART NO.	DESCRIPTION	QTY	名称
1	2.4.01.1070	CAMSHAFT ASSY	1	凸轮轴组件
2	0.05.01100	BEARING	1	轴承 6005/P5
3	0.05.01200	BEARING(B6202Z)	1	轴承 60202/P5
4	2.4.01.1010	PLATE	1	压紧盘
5	2.4.01.1020	WASHER	1	压紧垫片
6	0.01.06920	BOLT M6X12	2	螺栓 M6X12
7	2.4.01.1030	CAM CHAIN SPROCKET	1	正时传动链轮
8	2.4.01.1050	BREATHER PLATE 2	1	呼吸盘 II
9	2.4.01.1040	WASHER PLATE 10	1	垫片 10
10	0.01.04020	BOLT M10X1.25X25	1	螺栓 M10X1.25X25
11	2.4.01.0050	CHAIN	1	正时链条
12	2.4.01.0060	GUIDE STOPPER 1	1	正时链条导杆
13	2.4.01.0070	GUIDE STOPPER 2	1	正时链条拉力杆组件
14	2.1.01.0150	BOLT	1	拉力杆螺钉
15	8.3.01.0070	O-RING 14.5X1.8	1	O型圈 14.5X1.8
16	0.02.01340	BOLT	2	内六角圆柱头螺钉 M6X15
17	2.4.01.0080	CAM CHAIN TENSIONER ASSY	1	正时链条调整器组件
18	2.4.01.0090	GASKET TENSIONER CASE	1	正时链条调整器垫片

24 RADIATOR



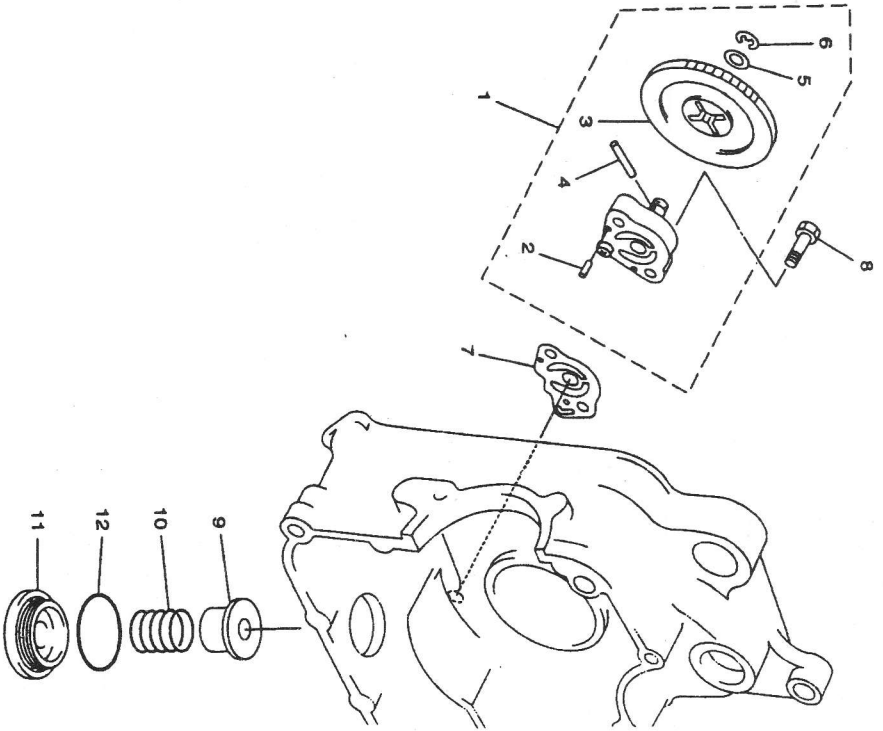
REF. No.	PART NO.	DESCRIPTION	QTY	名称
1	2.6.01.0010	THERMOSTAT	1	温度自动调节阀组件
2	2.6.01.0020	THERMOSTAT COVER	1	壳体
3	0.02.01540	BOLT M6X25	2	内六角圆柱头螺钉 M6X25
4	2.6.01.0031	RADIATOR ASSY	1	冷却器水箱组件(铝)
5	2.6.01.0041	FAN ELECTROMOTOR ASSY	1	风扇电机组件
6	0.01.00330	BOLT M6X10	3	螺栓 M6X12
7	2.6.01.0050	PRESSURE RELIEF VALVE	1	安全压力阀
8	2.6.01.0141	PIPE 1	1	冷却液回收软管
9	2.6.01.0071	HOSE	1	水管
10	2.6.01.0080	LET-OFF HOSE	1	水箱出水管
11	2.6.01.0090	INLET HOSE	1	水泵进水管
12	2.6.01.0100	SPRING	1	出水管弹簧
13	0.08.00900	HOSE CLAMP1	6	喉箍16/27
14	6.4.01.0020	HOSE CLAMP2	2	卡箍11.5
15	2.8.01.0010	HOSE1	1	小循环水管
16	6.4.01.0040	CLIP 10	2	卡箍10
17	2.6.01.0110	CUSHINO PAD	4	减震套
18	2.6.01.0120	BUSHING	2	销套10X20
19	2.6.01.0130	JOINT	1	接头
20	0.03.00330	NUT M6	2	螺母 M6
21	0.04.00410	WASHER 10	2	垫片10
22	0.08.00500	CLIP 2X20	2	开口销2X20

25 RADIATOR



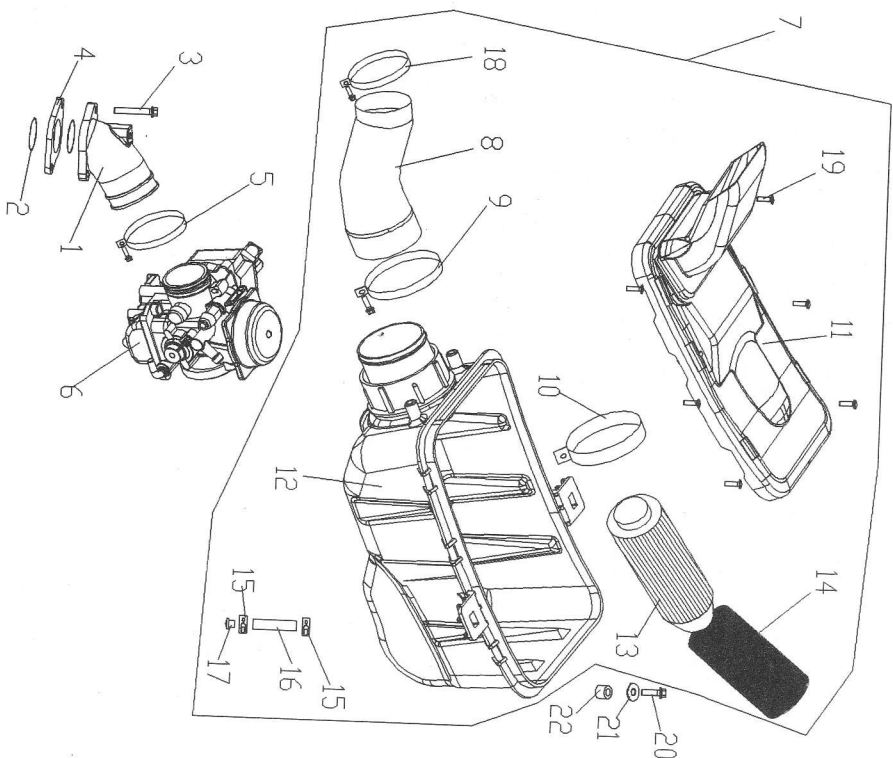
REF. No.	PART NO.	DESCRIPTION	Q'TY	名称
23	2.6.01.0170	RADIATOR COUPLER	1	水箱三通
24	0.04.00110	WASHER 6	2	垫片6
25	2.6.09.0010	TANK RECOVERER	1	回收罐
26	2.6.09.0020	TANK RECOVERER CAP	1	回收罐盖
27	0.02.00630	BOLT M5x12	2	十字槽盘头螺钉M5x12
28	2.6.09.0030	TANK RECOVERER VENT	1	回收罐连接嘴

26 OIL PUMP



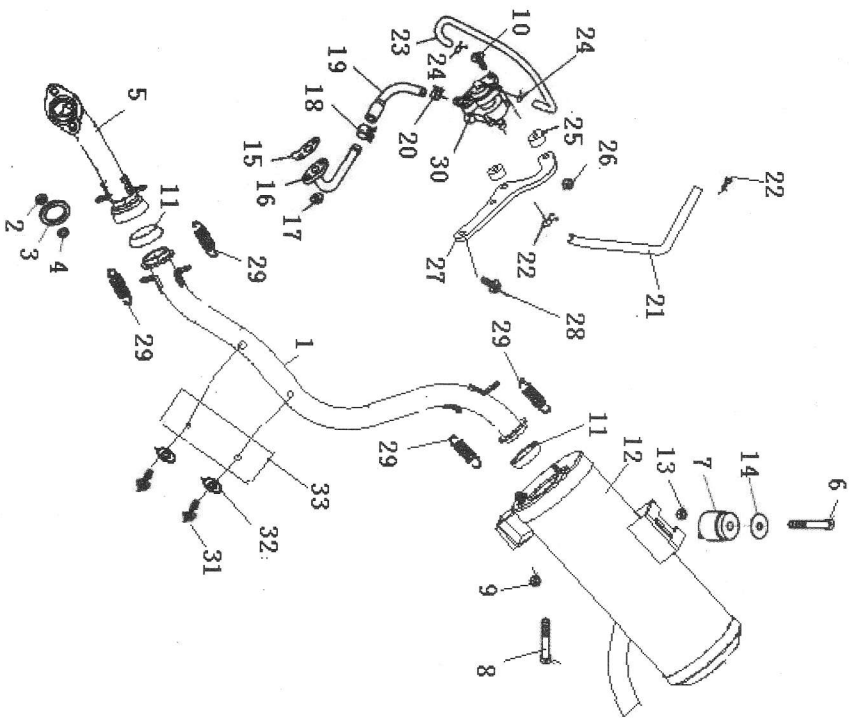
REF. No.	PART NO.	DESCRIPTION	QTY	名称
1	2.1.01.7000	OIL PUMP ASSY	1	机油泵部件
2	2.1.01.7010	DOWEL PIN 3X12	2	滚针 3X12
3	2.1.01.7020	DRIVER GEAR	1	传动齿轮
4	2.1.01.7060	DOWEL PIN C3X22	1	滚针 3X22
5	2.1.01.7040	WASHER	1	垫片 8
6	2.1.01.7050	BEAD FLANGE	1	开口挡圈 6
7	2.1.01.7030	GASKET	1	纸垫
8	0.02.00530	BOLT M6X22	2	十字槽盘头螺钉 M6x22
9	2.1.01.0190	OIL STRAINER	1	滤网组件
10	2.1.01.0200	SPRING	1	弹簧
11	2.1.01.0210	DRAIN PLUG	1	放油盖
12	8.3.01.0080	O-RING 36X3.5	1	O型圈 36X3.5

27 AIR CLEANER



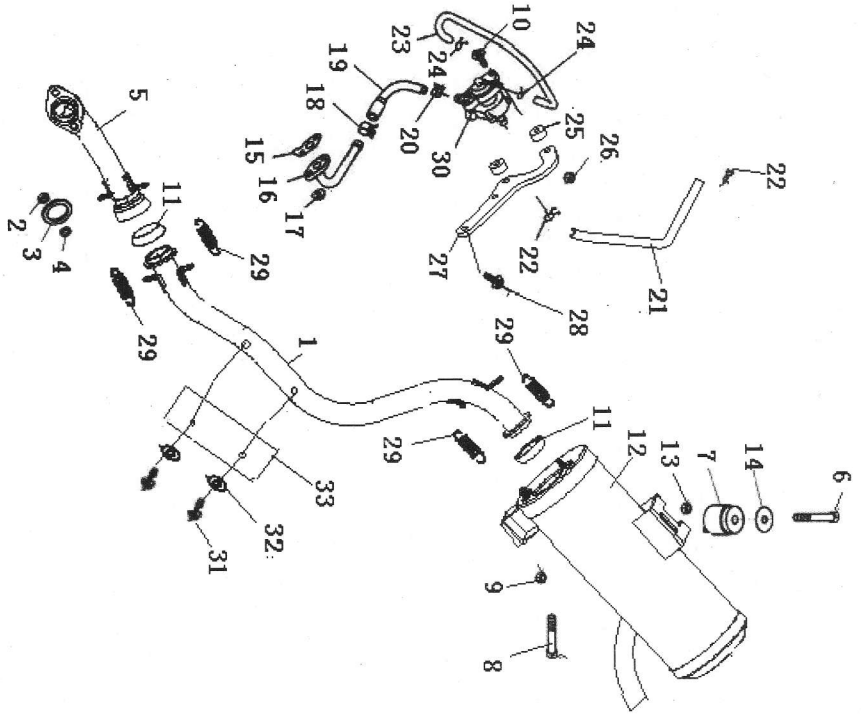
REF. No.	PART NO.	DESCRIPTION	Q'TY	名称
1	2.1.01.0090	CARBURETOR JOINT	1	进气连接弯管组件
2	8.3.01.0090	O-RING 35X2	2	O型圈35X2
3	0.02.01540	BOLT M6X25	2	内六角圆柱头螺钉 M6x25
4	2.1.01.0240	JOINT	1	法兰
5	2.1.01.0250	HOSE CLAMP D	1	环箍组件B
6	2.8.01.0000	CARBURETOR ASSY	1	化油器
7	2.5.01.0000	AIR CLEANER ASSY	1	空气滤清器组件
8	2.5.01.0020	AIR CLEANER JOINT	1	连接弯管
9	2.5.01.0120	HOSE CLAMP B	1	空滤器卡箍B
10	2.5.01.0090	HOSE CLAMP A	1	空滤器卡箍A
11	2.5.01.0050	AIR CLEANER COVER	1	空滤器盖组件
12	2.5.01.0060	AIR CLEANER CASE	1	空滤器箱体
13	2.5.01.0070	FILTER	1	滤芯组件
14	2.5.01.0080	FILTER COVER	1	滤芯套
15	6.4.01.0030	CLIP	2	卡箍Φ13
16	2.5.01.0100	HOSE	1	空滤器放油管
17	2.5.01.0110	PLUG	1	放油管堵头
18	2.5.01.0040	HOSE CLAMP C	1	空滤器卡箍C
19	0.02.00630	BOLT 5X12	10	十字槽盘头螺钉M5X12
20	0.01.00530	BOLT M6X30	2	螺栓M6X30
21	0.04.00110	WASHER6	2	垫片6
22	2.5.01.0010	CUSHION PAD	2	空滤器缓冲垫

28 EXHAUST



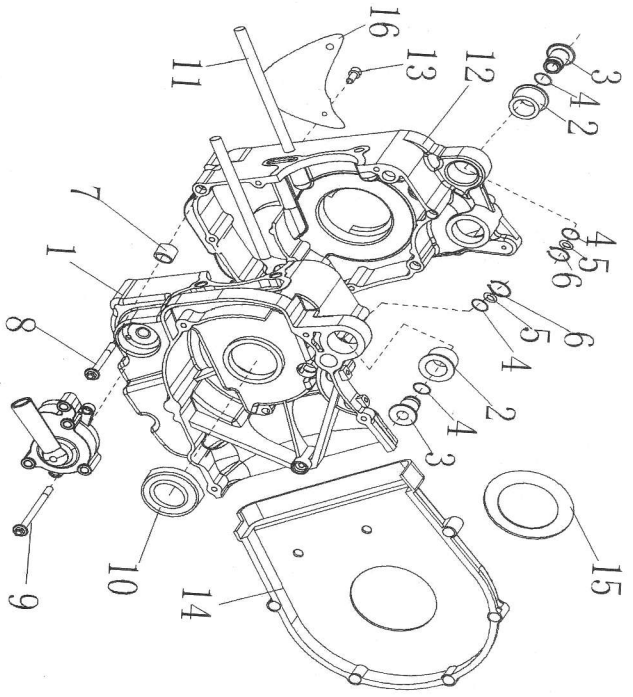
REF. No.	CODE	DESCRIPTION	Q'TY	名称
1	2.4.09.0020	EXHAUST PIPE 1	1	消音器后部弯管
2	0.03.00130	SELF-LOCKING NUT M8	2	螺母 M8
3	2.4.01.0270	EXHAUST PIPE GASKET	1	消音器垫片
4	0.04.00710	WASHER 8	2	弹垫8
5	2.4.09.0010	EXHAUST PIPE 2	1	消音器前部弯管
6	0.01.02730	BOLT M10X1.25X55	1	螺栓 M10X1.25X55
7	2.4.01.0290	MUFFLER SUPPORT	1	消音器上缓冲块组件
8	0.01.11933	BOLT M10X1.25X65	1	螺栓 M10X1.25X65
9	0.03.00530	NUT M10X1.25	1	螺母 M10X1.25
10	0.01.00530	BOLT M6X30	4	螺栓M6X30
11	2.4.01.0330	MUFFLER JOINT	2	锥形密封垫
12	2.4.09.0030	MUFFLER	1	消音器筒体 (欧标)
13	0.03.00530	NUT M10X1.25	1	螺母 M10X1.25
14	8.8.01.0270	WASHER	1	垫圈12
15	2.4.01.0360	WASHER	1	补气垫片
16	2.4.01.0370	HOSE	1	连接管组件(二次补气)
17	0.03.00330	BOLT M6	2	螺栓 M6
18	6.4.01.0030	CLIP 13	1	卡箍13
19	2.4.01.0381	HOSE I	1	连接管 I (新状态)
20	6.4.01.0030	CLIP 13	1	卡箍13
21	2.4.01.0391	HOSE II	1	连接管 II (新状态)
22	6.4.01.0100	CLIP 16	2	卡箍16
23	2.9.01.0270	PIPE	1	负压管

28 EXHAUST



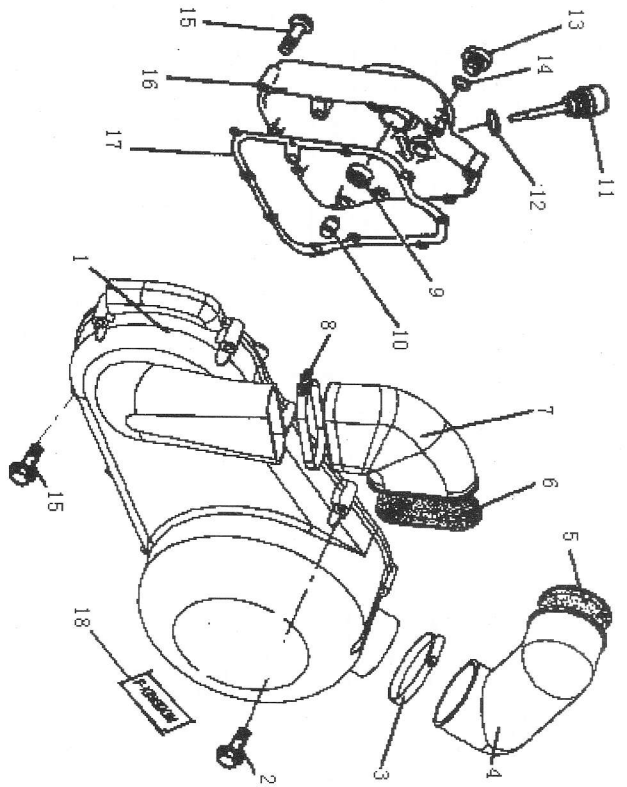
REF. No.	CODE	DESCRIPTION	Q'TY	名称
24	6.4.01.0040	CLIP 10	2	卡箍10
25	2.4.01.1090	CUSHION PAD	2	控制阀缓冲垫
26	0.03.00330	NUT M6	2	螺母M6
27	2.4.01.0411	VALVE BRACKET	1	控制阀安装支架(新状态)
28	0.01.00330	BOLT M6X12	2	螺栓M6X12
29	2.4.01.0430	SPRING	4	拉簧A
30	2.4.01.0440	VALVE	1	二次补气控制阀
31	0.02.01710	NUT M5X10	2	十字槽盘头螺钉 M5x10
32	0.04.00610	WASHER 6	2	弹垫6 发黑
33	2.4.01.0450	PLAQUE	1	装饰板

29 CRANKCASE



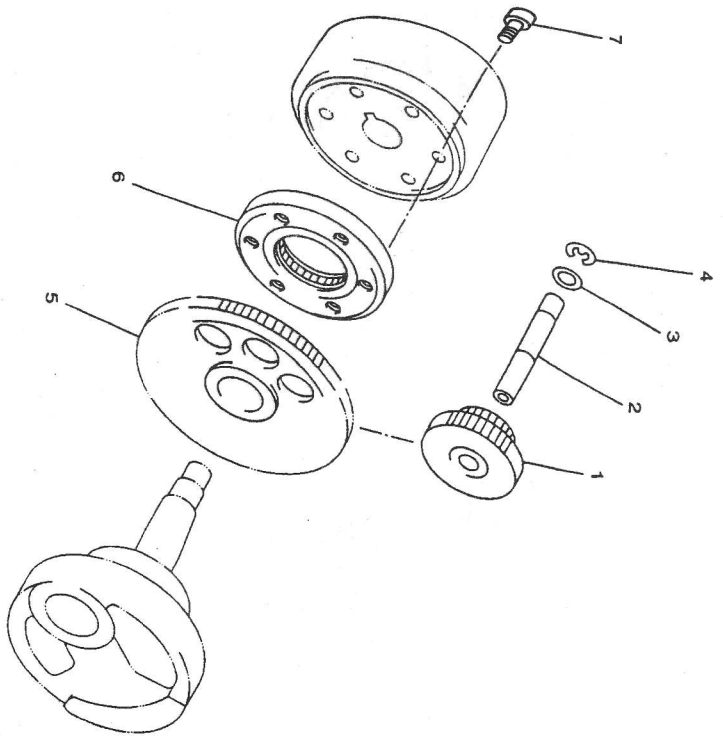
REF. No.	PART NO.	DESCRIPTION	QTY	名称
1	2.2.01.0210	COVER CRANKCASE LEFT	1	左箱体组件
2	2.2.01.0010	HOLDER	2	弹性衬套组件
3	2.2.01.0020	COLLAR	2	衬套
4	8.3.01.0120	O-RING	4	O型圈 16x2.25
5	8.8.01.0210	WASHER	2	垫圈 16
6	0.04.02310	BEAD FLANGE	2	挡圈 16
7	2.1.01.0420	DETENT PIN	2	定位销 10X14
8	8.1.01.0090	BOLT M6X70	4	螺栓 M6X70
9	8.1.01.0100	BOLT M6X100	5	螺栓 M6X100
10	8.9.01.0080	OIL SEAL 30X45X5	1	油封 30X45X5
11	8.1.01.0110	BOLT M8X245	4	双头螺栓 M8X245
12	2.2.01.0090	COVER CRANKCASE RIGHT	2	右箱体组件
13	0.02.01340	BOLT M6X12	1	内六角圆柱头螺钉 M6X15
14	2.2.01.0100	REAR INSIDE COVER	1	衬套
15	2.2.01.0110	SEALING COVER	1	密封盖
16	2.2.01.0030	OPPRESS FLAKE	1	压板

30 LEFT & RIGHT COVER



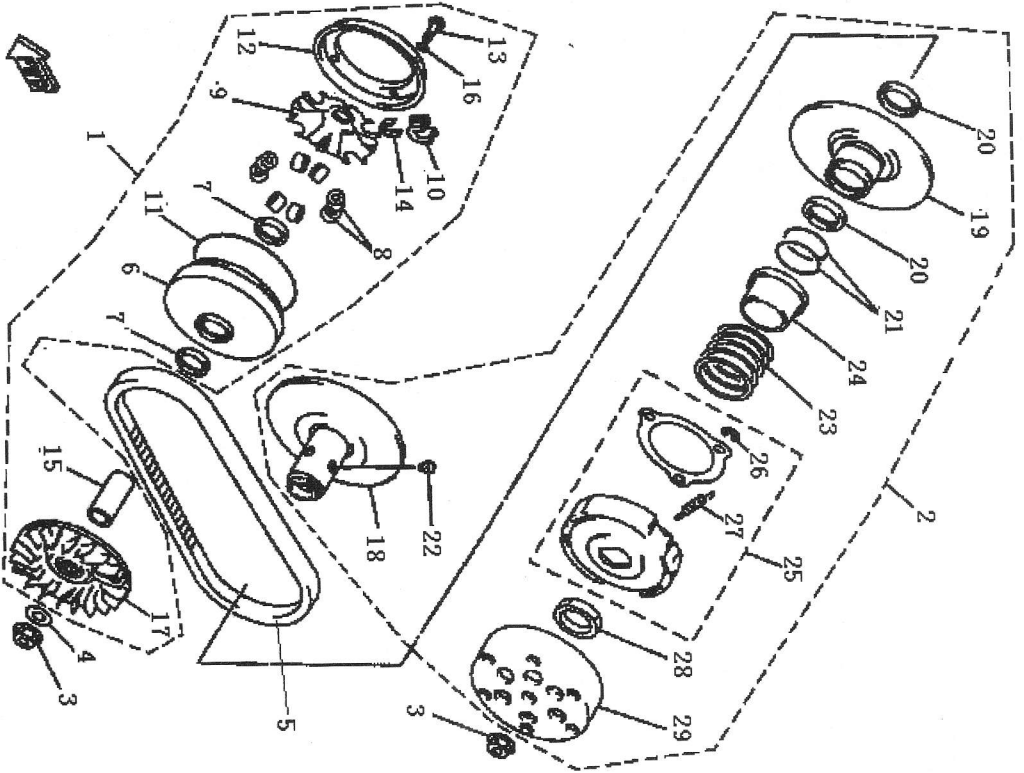
REF. No.	PART NO.	DESCRIPTION	Q'TY	名称
1	2.2.01.0120	COVER LEFT	1	左盖
2	8.1.01.0120	BOLT M6X52	5	螺栓M6X52
3	2.2.01.4030	HOSE CLAMP B	1	卡箍A
4	2.2.01.4010	JOINT A	1	出气弯管
5	2.2.01.3020	AIR STRAINER B	1	滤网B
6	2.2.01.4020	AIR STRAINER A	1	滤网A
7	2.2.01.3010	JOINT B	1	进气弯管
8	2.2.01.3030	HOSE CLAMP A	1	卡箍B
9	8.9.01.0090	OIL SEAL	1	油封组件14x27x6/8
10	2.1.01.0420	DOWEL PIN 10X14	4	定位销10X14
11	2.2.01.0180	OIL PLUG	1	机油尺
12	0.06.00600	O-RING 18X2.65	1	O型圈 18X2.65
13	2.2.01.0190	OIL PLUG	1	窥视盖
14	0.06.00400	O-RING 14X2.65	1	O型圈 14X2.65
15	8.1.01.0130	BOLT M6X40	15	螺栓M6X40
16	2.2.01.0200	CAP COVER	1	右盖
17	2.2.01.0220	COVER GASKET RIGHT	1	右盖垫
18	7.5.01.0020	APPLIQUE	1	左盖贴花

31 STARTER



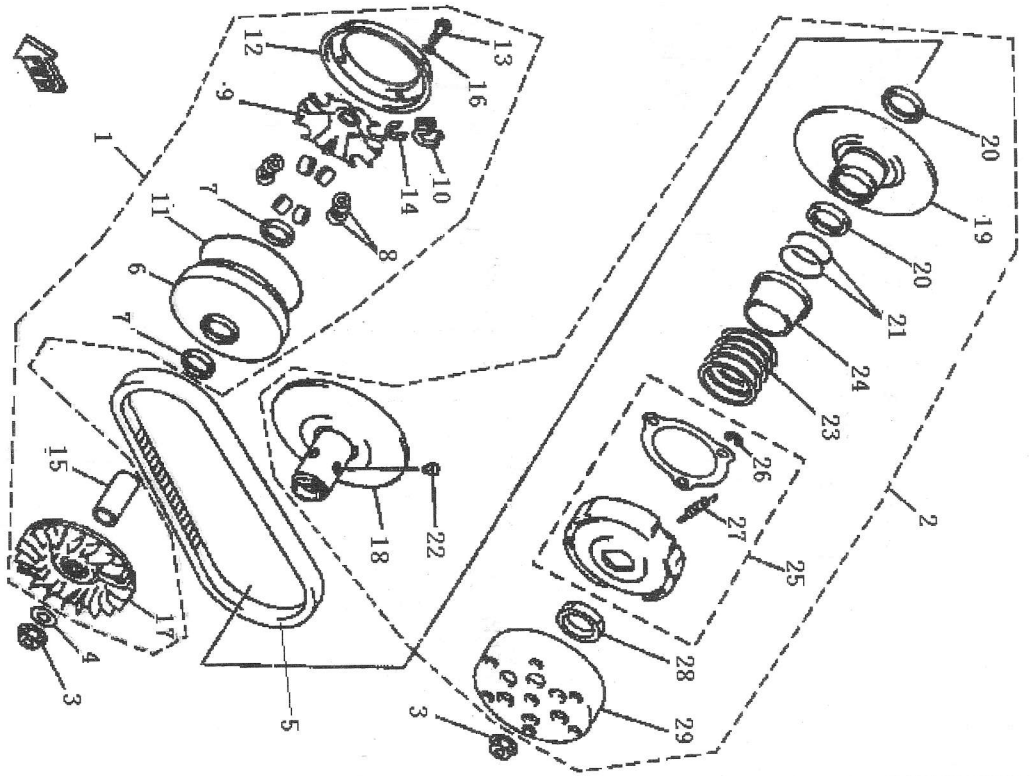
REF. No.	PART NO.	DESCRIPTION	Q'TY	名称
1	2.1.01.0260	DUPPLICATE GEAR	1	双联齿轮
2	2.1.01.0270	SHAFT	1	中间轴
3	8.8.01.0220	WASHER 12	1	垫圈12
4	0.04.02410	BEAD GLANGE	1	弹性挡圈12 发黑
5	2.1.01.0280	OUTPUT GEAR	1	输出齿轮组件
6	2.1.01.0290	STARTER CLUTCH	1	超越离合器组件
7	0.02.01920	BOLT M8X16	3	内六角平圆头螺钉 M8X16

32 CLUTCH



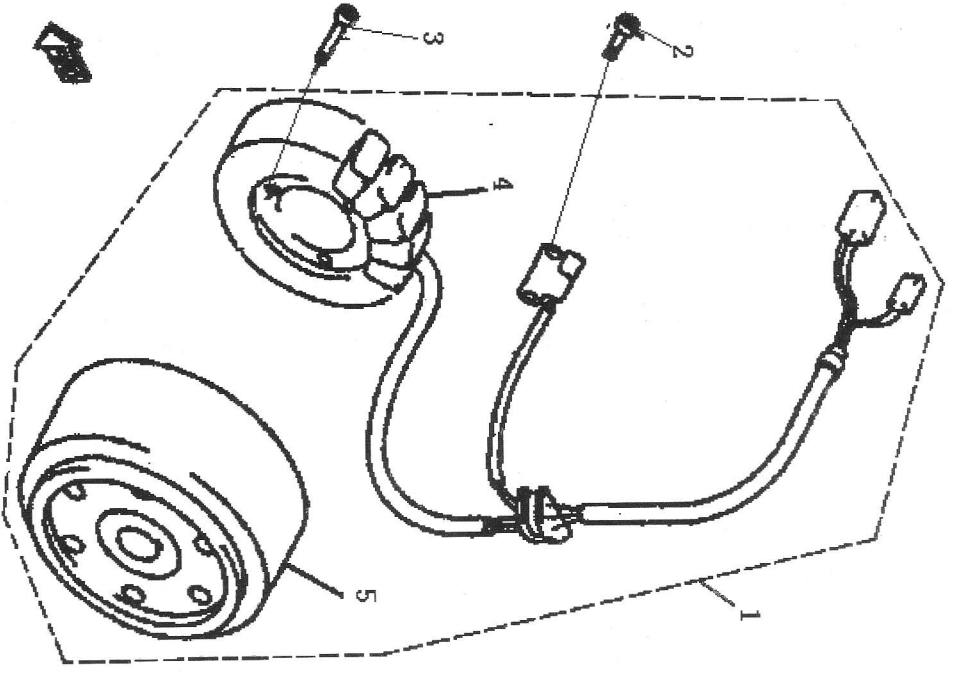
REF. No.	PART NO.	DESCRIPTION	QTY	名称
1	2.3.01.2000	DRIVE ASSY COMPLETE	1	主动皮带轮组件
2	2.3.01.1000	DRIVEN ASSY COMPLETE	1	从动轮及离合器组件
3	8.2.01.0120	NUT M14X1	2	螺母M14X1
4	8.8.01.0240	WASHER	1	平垫圈
5	2.3.01.0050	V-BELT	1	皮带
6	2.3.01.2010	DRIVING PULLEY ASSY, RIGHT	1	主动皮带轮右半组件
7	2.3.01.2130	OIL SEAL	2	油封
8	2.3.01.2030	ROLL SUBASSEMBLY	8	滚动组件
9	2.3.01.2040	CAM	1	滚动滑盘
10	2.3.01.2050	SNUBBER BLOCK	4	缓冲块
11	2.3.01.2020	O-RING 118X2.5	1	O型圈 118X2.5
12	2.3.01.2070	STOPPER	1	挡块
13	2.3.01.2110	BOLT	4	螺钉 M4X12
14	2.3.01.2080	CLIP	4	定位夹
15	2.3.01.2100	COLLAR	1	滑套
16	2.3.01.2120	WASHER	4	小垫片4
17	2.3.01.2090	DRIVING PULLEY ASSY, LEFT	1	主动皮带轮左半
18	2.3.01.1030	BEFT ROLLER ASSY, RIGHT	1	皮带轮右半组件
19	2.3.01.1040	BELT ROLLER ASSY, LEFT	1	皮带轮左半组件
20	2.3.01.1050	OIL SEAL	2	外露骨架油封
21	2.3.01.1020	O-RING 45X1.8	2	O型圈45X1.8
22	2.3.01.1070	PIN GUIDE	4	导向销钉

32 CLUTCH



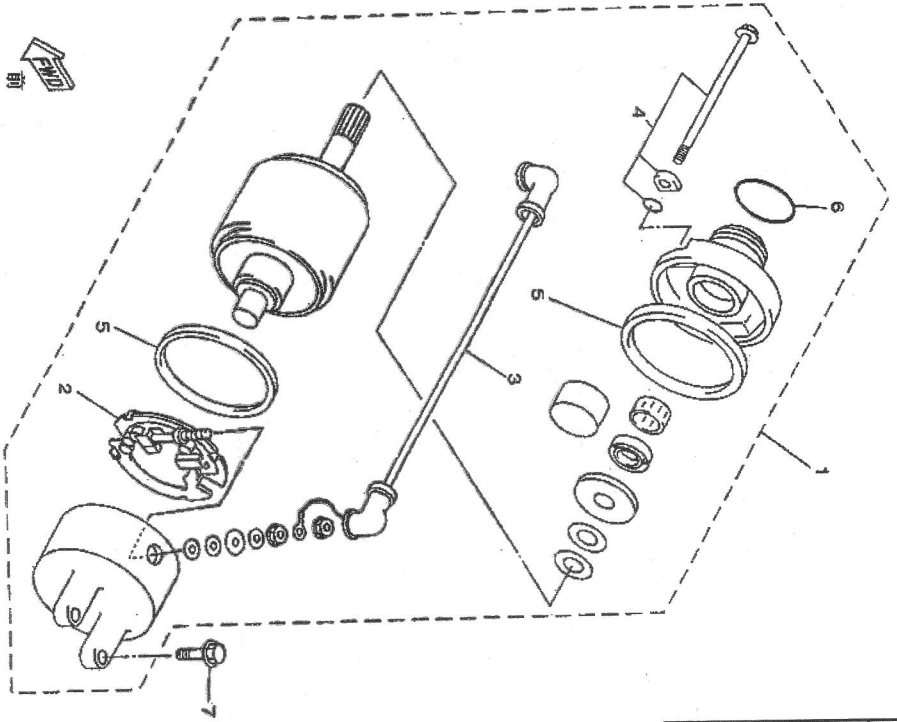
REF. No.	PART NO.	DESCRIPTION	QTY	名称
23	2.3.01.1080	COMPRESSION SPRING	1	离合器弹簧
24	2.3.01.1090	SPRING RETAINER	1	弹簧座
25	2.3.01.1100	CLUTCH CARRIER ASSY	1	离心块组件
26	2.3.01.1120	BEAD FLANGE	3	挡圈8
27	2.3.01.1110	SPRING 1	3	离心块弹簧
28	2.3.01.1130	NUT M36X1.5	1	扁螺母M36X1.5
29	2.3.01.1010	CLUTCH HOUSING COMP.	1	离合碟组件

33 GENERATOR



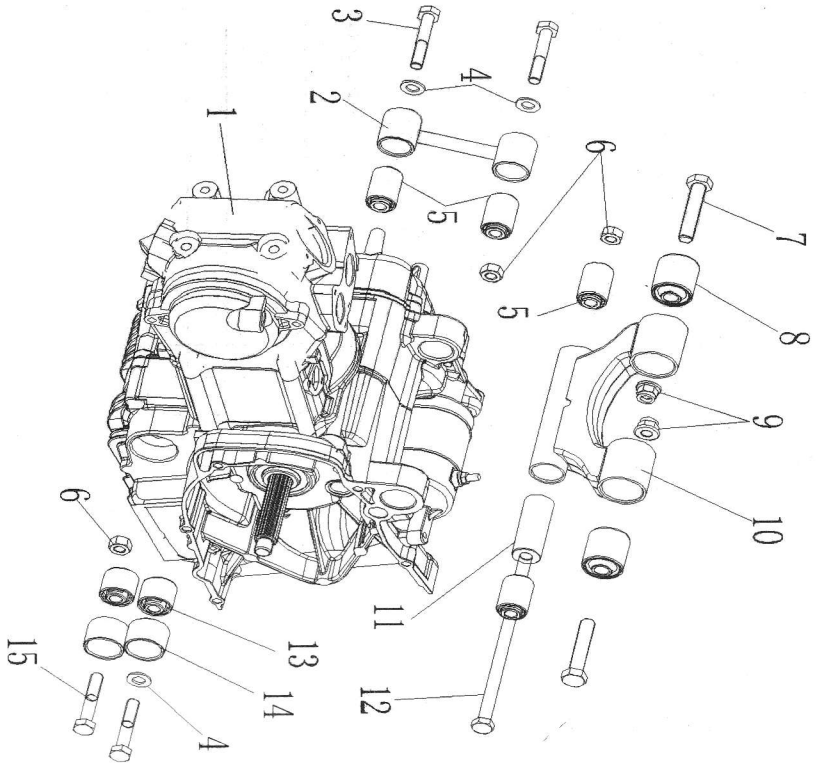
REF. No.	PART NO.	DESCRIPTION	QTY	名称
1	2.1.01.2002	GENERATOR ASSY	1	电机组件 (大功率, 防水)
2	2.1.01.2030	BOLT M5X10	2	内六角圆柱头螺钉 M5X10
3	2.1.01.2040	BOLT M6X28	3	内六角圆柱头螺栓 M6X28
4	2.1.01.2060	STATOR ASSY	1	定子组合 (大功率, 防水)
5	2.1.01.2020	ROTOR ASSY	1	转子组合 (大功率)

34 S TARTING MOTOR



REF. No.	PART NO.	DESCRIPTION	QTY	名称
1	2.1.01.6000	STARTING MOTOR ASSY	1	起动电机部件
2	2.1.01.6010	BRUSH HOLD ASSY	1	碳刷架
3	2.1.01.6020	CORD STARTER MOTOR	1	正接线
4	2.1.01.6030	BOLT	2	螺栓
5	2.1.01.6040	GASKET	2	衬垫
6	2.1.01.6050	O-RING 24.5X3	1	O型圈 24.5X3
7	2.1.01.6060	BOLT M6X25	2	螺栓 M6X25

35 ENGINE



REF. No.	PART NO.	DESCRIPTION	QTY	名称
1	2.1.01.0003	ENGINE ASSY	1	发动机总成 (欧标, 防水)
2	2.7.01.0110	STAY ENGINE RIGHT	1	右摇臂
3	0.01.02830	BOLT M10X1.25X65	2	螺栓 M10x1.25x65
4	0.04.00410	WASHER 10	4	垫片 10
5	2.7.01.0070	BUSHING ENGINE BRACKET II	4	吊架缓冲套 II
6	0.03.00530	NUT M10X1.25	3	螺母 M10X1.25
7	8.1.01.0150	ENGINE BRACKET BOLT	2	吊架安装轴
8	2.7.01.0060	BUSHING ENGINE BRACKET I	2	吊架缓冲套 I
9	0.03.00630	NUT M12X1.25	2	螺母 M12X1.25
10	2.7.01.0050	FRONT ENGINE MOUNT BRACKET	1	吊架焊接组件
11	2.7.01.0080	SPACER ENGINE BRACKET	1	吊架隔套
12	8.1.01.0160	ENGINE MOUNTING BOLT	1	发动机轴M10x226
13	2.7.01.0090	BUSHING	2	左摇臂缓冲套
14	2.7.01.0100	STAY ENGINE LEFT	1	左摇臂
15	0.01.02730	BOLT M10X1.25X55	2	螺栓 M10x1.25x55